

**GENERAL NOTES:**

1. THIS PRODUCT HAS BEEN TESTED, ANALYZED & APPROVED FOR DESIGN PRESSURES NOT TO EXCEED THOSE SHOWN IN THE "ALLOWABLE DESIGN PRESSURE TABLE(S)".
2. OPENINGS, BUCKING & BUCKING FASTENERS MUST BE PROPERLY DESIGNED & INSTALLED TO TRANSFER WIND LOADS TO THE STRUCTURE.
3. ALL HARDWARE & FASTENERS SHALL BE IN ACCORDANCE WITH THESE DRAWINGS & SHALL NOT VARY UNLESS SPECIFICALLY MENTIONED ON THE DRAWINGS. SPECIFIED ANCHOR EMBED TO BASE MATERIAL SHALL BE BEYOND WALL FINISH OR STUCCO.
4. THIS PRODUCT HAS BEEN DESIGNED IN ACCORDANCE WITH AND MEETS THE REQUIREMENTS OF THE FLORIDA BUILDING CODE (FBC) INCLUDING HIGH VELOCITY HURRICANE ZONES (HVHZ) & IS LARGE MISSILE IMPACT RATED.
5. IMPACT SHUTTERS ARE NOT REQUIRED WITH THIS PRODUCT.
6. ALL ANCHORS SECURING PRODUCT FRAMES TO PRESSURE TREATED BUCKS OR WOOD FRAMING SHALL BE CAPABLE OF RESISTING CORROSION CAUSED BY THE PRESSURE TREATING CHEMICALS IN THE WOOD.
7. DETERMINE THE POSITIVE & NEGATIVE DESIGN LOADS TO USE WHEN REFERENCING THESE DOCUMENTS IN ACCORDANCE WITH THE GOVERNING CODE AND GOVERNING WIND VELOCITY. FOR WIND LOAD CALCULATIONS IN ACCORDANCE WITH THE FLORIDA BUILDING CODE, A DIRECTIONALITY FACTOR OF  $K_d = 0.85$  MAY BE APPLIED PER THE ASCE-7 STANDARD.
8. MATERIALS, INCLUDING BUT NOT LIMITED TO STEEL SCREWS, THAT COME INTO CONTACT WITH OTHER DISSIMILAR MATERIALS SHALL MEET THE REQUIREMENTS OF FLORIDA BUILDING CODE.
9. TO THE BEST OF OUR KNOWLEDGE, THE PRODUCT SHOWN HEREIN IS QUALITY ASSURED BY A FLORIDA STATE APPROVED CERTIFICATION/QA ENTITY & SHALL BE LABELED IN ACCORDANCE WITH THE FBC AND THE FLORIDA DEPARTMENT OF BUSINESS & PROFESSIONAL REGULATION SPECIFICATIONS. THESE DRAWINGS SHOW ALL APPLICABLE ELEVATION, COMBINATION, INSTALLATION & COMPARATIVE ANALYSIS CONDITIONS AS DETERMINED THROUGH TESTING & ENGINEERING RATIONAL ANALYSIS. PRODUCT ASSEMBLY SHALL BE IN ACCORDANCE WITH THESE DRAWINGS, THE MANUFACTURER'S QUALITY ASSURANCE SPECIFICATIONS & TESTING REPORTS.
10. CERTIFICATION OF THIS PRODUCT SHALL BE CONSIDERED VOID IF IT IS INSTALLED WITHOUT A BUILDING PERMIT FROM THE APPLICABLE LOCAL BUILDING DEPARTMENT OR IF IT IS INSTALLED BY ANYONE OTHER THAN A LICENSED CONTRACTOR EXPERIENCED WITH INSTALLATIONS OF THIS TYPE OF PRODUCT.

**CORNER & FRAME END CONSTRUCTION:**

**FRAME HEAD CORNER (IR500/501):** HEAD IS SQUARE CUT, BUTTED TO SIDE, FASTENED WITH THREE (3) NO. 12 X 1" S.S. PHFS FASTENERS THROUGH THE SIDE MEMBER INTO THE HEAD MEMBER SCREW SPLINES & SEALED WITH SILICONE.

**FRAME HEAD CORNER (TRIFAB 450/451 FRAME):** HEAD IS SQUARE CUT, BUTTED TO SIDE, SECURED WITH SHEAR BLOCK ITEM# 16 (SEE SECTIONS G/9 & M/10) & SEALED WITH SILICONE.

**FRAME SILL CORNER:** SILL IS SQUARE CUT, BUTTED TO SIDE, SECURED TO THE SIDE MEMBER USING A PIVOT ASSEMBLY OR STEEL CLIP, FASTENED WITH THREE (3) NO. 12-24 X 3/8" FHMS AT THE FRAME & TWO (2) NO. 12-24 X 3/8" FHMS AT THE SILL, & SEALED WITH SILICONE.

**DOOR PANEL CORNERS:** VERTICAL STILES RUN THROUGH AND ARE SECURED TO THE RAILS AT THE TOP & BOTTOM WITH 1/4" THICK EXTRUDED CHANNELS. EACH CHANNEL IS FASTENED TO THE STILE & RAIL WITH 1/4-20 X 3/4" PHMS & 3/16" THICK STEEL NUT PLATES. THE INTERSECTION OF EACH CORNER JOINT WAS WELDED WITH A 1/2" DIA. PLUG WELD AND A 1 1/8" LONG FILLET WELD AT BOTH WEBS OF THE RAIL.

**MIDRAIL ENDS:** SECURED TO THE VERTICAL RAILS WITH 4 EACH 1 1/8" LONG FILLET WELDS

EVALUATION OF THIS PRODUCT IS BASED ON APPLICABLE STANDARDS AND/OR INFORMATION & RESULTS FROM APPLICABLE TEST REPORTS. THE FLORIDA BUILDING CODE VERSION CONSIDERED WITH THIS EVALUATION WAS THAT IN FORCE AT THE TIME OF THE EVALUATION. IN THE EVENT OF CODE VERSION CHANGES/UPDATES OR IN THE EVENT THAT NEW OR ADDITIONAL TESTING IS COMPLETED ON THIS PRODUCT, PRIOR TO STATING CODE COMPLIANCE WITH THE STATE, THE MANUFACTURER SHALL CONFIRM WITH THE EVALUATION ENGINEER OF RECORD THAT EVERYTHING SPECIFIED HERE-IN IS CURRENT WITH ALL CURRENT TESTING, CODES AND APPLICABLE STANDARDS.

**TABLE OF CONTENTS**

| SHEET   | DESCRIPTION                                                                         |
|---------|-------------------------------------------------------------------------------------|
| 1       | GENERAL NOTES & ANCHOR REQUIREMENTS TABLE                                           |
| 2       | ELEVATIONS (DOORS WITH IR500/501 STOREFRONT FRAMING)                                |
| 3       | ELEVATIONS (DOORS WITH TRIFAB 450/451 STOREFRONT FRAMING)                           |
| 4       | ELEVATIONS (ALTERNATE INSTALLATION)                                                 |
| 5       | ELEVATIONS (DOORS IN IR500/501 STOREFRONT & 1600 SYSTEM 1 CURTAIN WALL)             |
| 6       | HARDWARE CONDITIONS & CORRESPONDING PRESSURE TABLES                                 |
| 7       | GLAZING DETAILS & CORRESPONDING LOAD TABLES                                         |
| 8 & 9   | SECTIONS SPECIFIC TO DOORS IN IR500/501 STOREFRONT FRAMING                          |
| 10      | SECTIONS SPECIFIC TO DOORS IN TRIFAB 450/451 STOREFRONT FRAMING                     |
| 11      | SECTIONS SPECIFIC TO DOORS INSIDE IR500/501 STOREFRONT & 1600 SYSTEM 1 CURTAIN WALL |
| 12      | SECTIONS GENERIC & APPLICABLE TO ALL DOOR CONDITIONS                                |
| 13 & 14 | PART DRAWINGS                                                                       |
| 15      | PARTS LIST                                                                          |

**WATER RATING NOTE:** THESE DOOR UNITS ARE NOT APPROVED FOR USE WHERE WATER INFILTRATION RESISTANCE IS REQUIRED BY THE DOOR UNLESS ONE OF THE FOLLOWING APPLIES:

1. UNITS ARE INSTALLED IN NON-HABITABLE AREAS WHERE THE UNIT & THE AREA ARE DESIGNED TO ACCEPT WATER INFILTRATION.
2. UNITS ARE INSTALLED AT A LOCATION PROTECTED BY A CANOPY OR OVERHANG WHERE-BY THE OVERHANG(OH) RATIO IS EQUAL TO OR MORE THAN 1.0 PER FBC.
3. IF THE DOOR IS INSTALLED IN AN IR-501 SYSTEM THAT HAS THE HEAD JAMB WEATHER SEAL SHOWN IN SECTIONS A1 OR A5, HAS A SILL & SILL DAM ASSEMBLY AS SHOWN IN SECTION D2, IF A DOUBLE DOOR, HAS MEETING STILE COVERS AS SHOWN IN SECTION E1, USES THE 2 POINT LOCK PART NUMBER 40 OR 42 AT INACTIVE PANELS, USES THE 3-POINT LOCK UNDER PART NUMBER 39 OR 41 AT ACTIVE PANELS AND USES THE GEAR OR BUTT HINGES UNDER PART NUMBER 36 OR 37. NOTE THAT THE POSITIVE PRESSURE ON A WATER RATED DOOR MAY NOT EXCEED +80 PSF.

**FRAME ANCHOR REQUIREMENTS TABLE**

**FRAME & SILL ANCHORS**

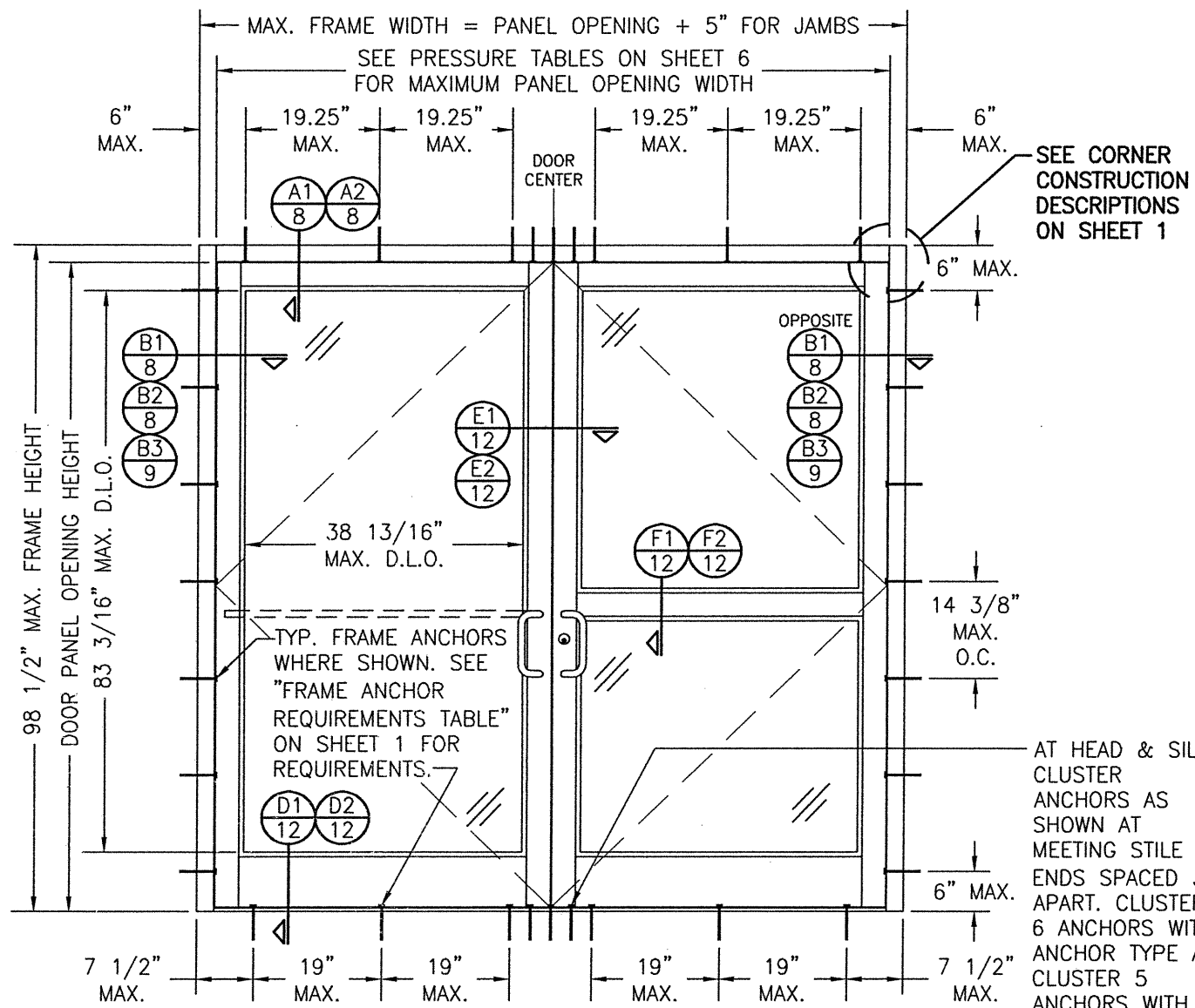
| ANCHOR TYPE | OPENING TYPE (SUBSTRATE)                     | JAMB TO OPENING FASTENER TYPE       | MINIMUM EMBED | MINIMUM EDGE DIST. |
|-------------|----------------------------------------------|-------------------------------------|---------------|--------------------|
| A           | 2X_ WOOD FRAME OR BUCK (MIN. GR. 3 & G=0.55) | NO. 14 SMS SCREW                    | 1 1/4"        | 3/4"               |
| B           | MIN. 18 GA. 33 KSI METAL STUD                | (2) NO. 12 SELF DRILL/TAPPING SCREW | FULL          | 1/2"               |
| C           | MIN. 0.22" THICK A36 STEEL                   | (2) 1/4-20 SELF DRILL/TAPPING SCREW | FULL          | 1/2"               |
| D           | MIN. 3000 P.S.I. CONCRETE                    | (1) 1/4" CONCRETE SCREW             | 1 3/4"        | 2 1/2"             |
| E           | MIN. C90 CONCRETE FILLED BLOCK               | (1) 1/4" CONCRETE SCREW             | 1 1/2"        | 2 1/2"             |
| F           | CURTAIN WALL                                 | (2) 1/4-20 SELF DRILL/TAPPING SCREW | FULL          | 1/2"               |

(1) CONCRETE SCREWS SHALL BE ELCO ULTRACONS (C.S.), ELCO CRETE-FLEX (S.S.) OR HILTI KWIK-CON II (C.S OR S.S.).

(2) SELF DRILLING & SELF TAPPING SCREWS SHALL BE MIN. GRADE 5 CORROSION RESISTANT STEEL

|                                                                               |                               |                                                           |          |
|-------------------------------------------------------------------------------|-------------------------------|-----------------------------------------------------------|----------|
| DRAWN BY: W.R.M.                                                              |                               | CHECKED BY: W.W.S.                                        |          |
| PLOT: 1=24                                                                    |                               | DATE: 11/10/05                                            |          |
| NO.                                                                           | REVISION DESCRIPTION          | BY                                                        | DATE     |
| C1                                                                            | NEW GLAZING & LOCKS           | WRM                                                       | 08/28/09 |
| D1                                                                            | UPDATE PER NEW TESTING        | WRM                                                       | 02/11/11 |
| E1                                                                            | UPDATE PER NEW TESTING        | WRM                                                       | 01/30/14 |
| F1                                                                            | CHANGE TO STATE ONLY APPROVAL | WWS                                                       | 06/28/18 |
| G1                                                                            | REFORMATTED DRAWINGS          | WWS                                                       | 09/01/20 |
| H1                                                                            | UPDATE FOR WATER RATING       | WWS                                                       | 08/04/21 |
| DRAWING TITLE: 350/500IR OUTSWING ALUMINUM STOREFRONT DOORS - LMI WET GLAZED  |                               |                                                           |          |
| CONSULTANTS                                                                   |                               | MANUFACTURER                                              |          |
| W. W. SCHAEFER ENGINEERING & CONSULTING, P.A. (CA 6809)                       |                               | KAWNEER COMPANY, INC.                                     |          |
| 7480 150TH COURT NORTH<br>PALM BEACH GARDENS, FL 33418<br>PHONE: 561-744-3424 |                               | 555 GUTHRIDGE COURT<br>NORCROSS, GA 30092<br>770-449-5555 |          |
| CERTIFICATION                                                                 |                               |                                                           |          |
| AUG 05 2021                                                                   |                               |                                                           |          |
| WARREN W. SCHAEFER, P.E.<br>P.E. NO. 44135                                    |                               |                                                           |          |
| DRAWING NO. 1460                                                              |                               | REV. H                                                    |          |
| SHEET NO. 1                                                                   |                               | OF 15                                                     |          |

THESE DRAWINGS ARE APPLICABLE ONLY TO THE PRODUCT SPECIFIED. THEY MAY NOT BE USED FOR THE ASSEMBLY AND/OR INSTALLATION OF ANY OTHER PRODUCT NOR MAY THEY BE USED FOR RATIONAL AND/OR LOCAL APPROVAL OF ANY PRODUCT NOT PRODUCED BY THE MANUFACTURER STATED ON THESE DRAWINGS.



**EXTERIOR ELEVATION: DOUBLE DOOR WITH IR500/501 STORE FRONT FRAMING & STANDARD INSTALLATION**

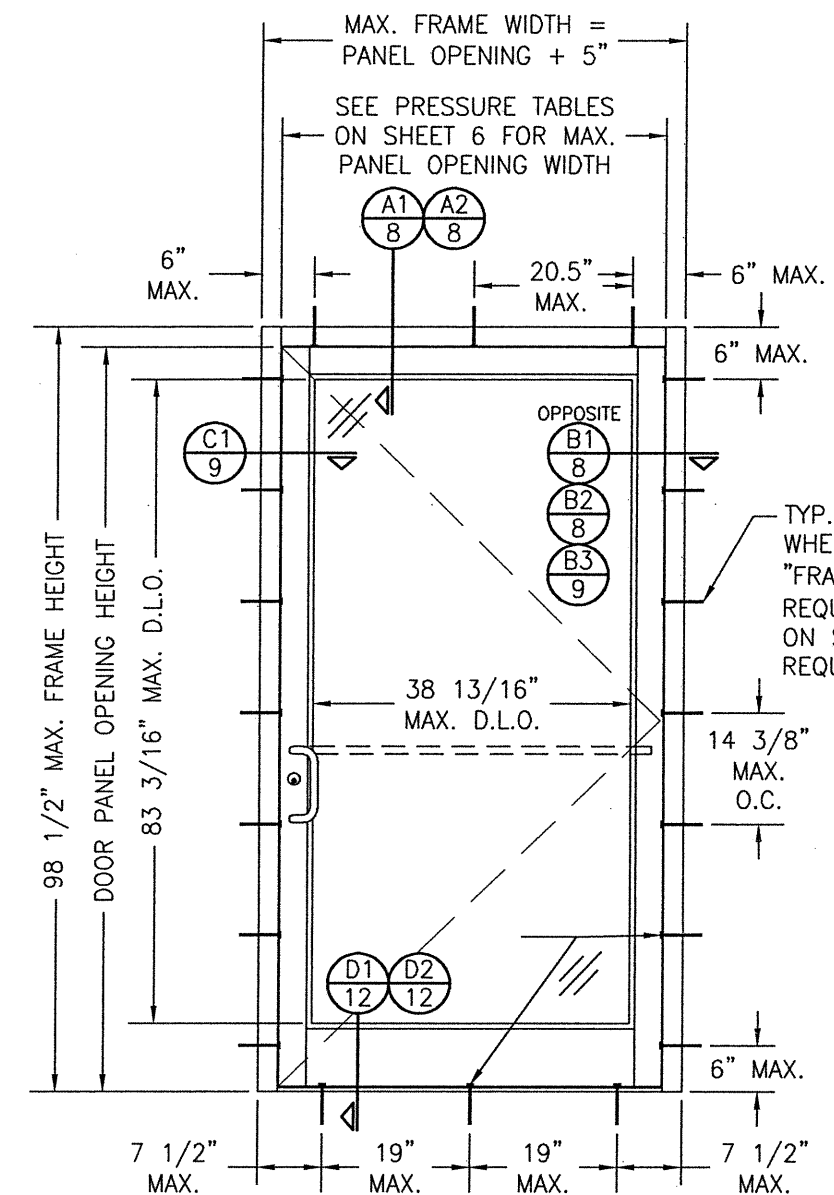
SCALE: 1/2" = 1'-0"  
(APPLICABLE WITH ALL HINGE TYPES)

SEE CORNER CONSTRUCTION DESCRIPTIONS ON SHEET 1

AT HEAD & SILL, CLUSTER ANCHORS AS SHOWN AT MEETING STILE ENDS SPACED 3" APART. CLUSTER 6 ANCHORS WITH ANCHOR TYPE A; CLUSTER 5 ANCHORS WITH ANCHOR TYPES B, C, D & F (ANCHOR "E" IS NOT APPLICABLE AT HEAD & SILL).

TO AVOID CONFUSION, LOCK CONDITIONS ARE NOT CALLED OUT/SPECIFIED IN THE ELEVATIONS. SEE PRESSURE TABLES ON SHEET 6 & PARTS LIST ON SHEET 15 FOR ALL LOCK OPTIONS.

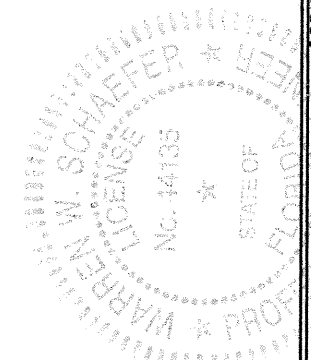
**ALLOWABLE DESIGN PRESSURE**  
SEE SHEETS 6 & 7



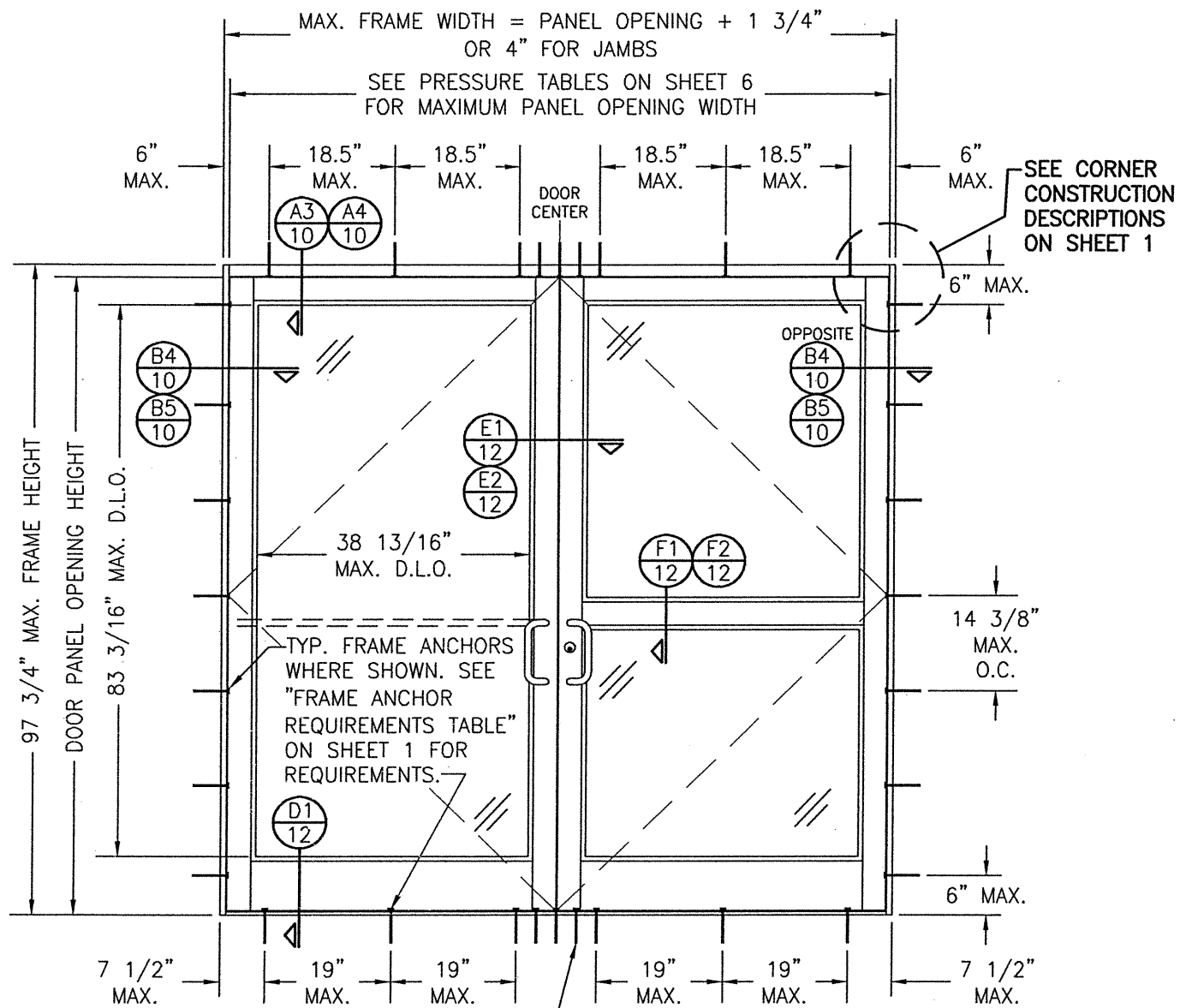
**EXTERIOR ELEVATION: SINGLE DOOR WITH IR500/501 STORE FRONT FRAMING & STANDARD INSTALLATION**

SCALE: 1/2" = 1'-0"  
(APPLICABLE WITH ALL HINGE TYPES)

TYP. FRAME ANCHORS WHERE SHOWN. SEE "FRAME ANCHOR REQUIREMENTS TABLE" ON SHEET 1 FOR REQUIREMENTS.



|                                                                                                                                          |                                                                                  |
|------------------------------------------------------------------------------------------------------------------------------------------|----------------------------------------------------------------------------------|
| DRAWN BY:<br>W.R.M.                                                                                                                      | CHECKED BY:<br>W.W.S.                                                            |
| PLOT:<br>1=24                                                                                                                            | DATE:<br>11/10/05                                                                |
| DATE                                                                                                                                     | BY                                                                               |
| REVISION DESCRIPTION                                                                                                                     |                                                                                  |
| NO.                                                                                                                                      |                                                                                  |
| DRAWING TITLE: 350/500IR OUTSWING ALUMINUM STOREFRONT DOORS - LMI WET GLAZED                                                             |                                                                                  |
| CONSULTANTS                                                                                                                              | MANUFACTURER                                                                     |
| W. W. SCHAEFER ENGINEERING & CONSULTING, P.A. (CA 6809)<br>7480 150TH COURT NORTH<br>PALM BEACH GARDENS, FL 33418<br>PHONE: 561-744-3424 | KAWNEER COMPANY, INC.<br>555 GUTHRIE COURT<br>NORCROSS, GA 30092<br>770-449-5555 |
| CERTIFICATION                                                                                                                            |                                                                                  |
| AUG 05 2021                                                                                                                              |                                                                                  |
| WARREN W. SCHAEFER, P.E.<br>P.E. NO. 44135                                                                                               |                                                                                  |
| DRAWING NO.<br>1460                                                                                                                      | REV.<br>H                                                                        |
| SHEET NO.<br>2 OF 15                                                                                                                     |                                                                                  |

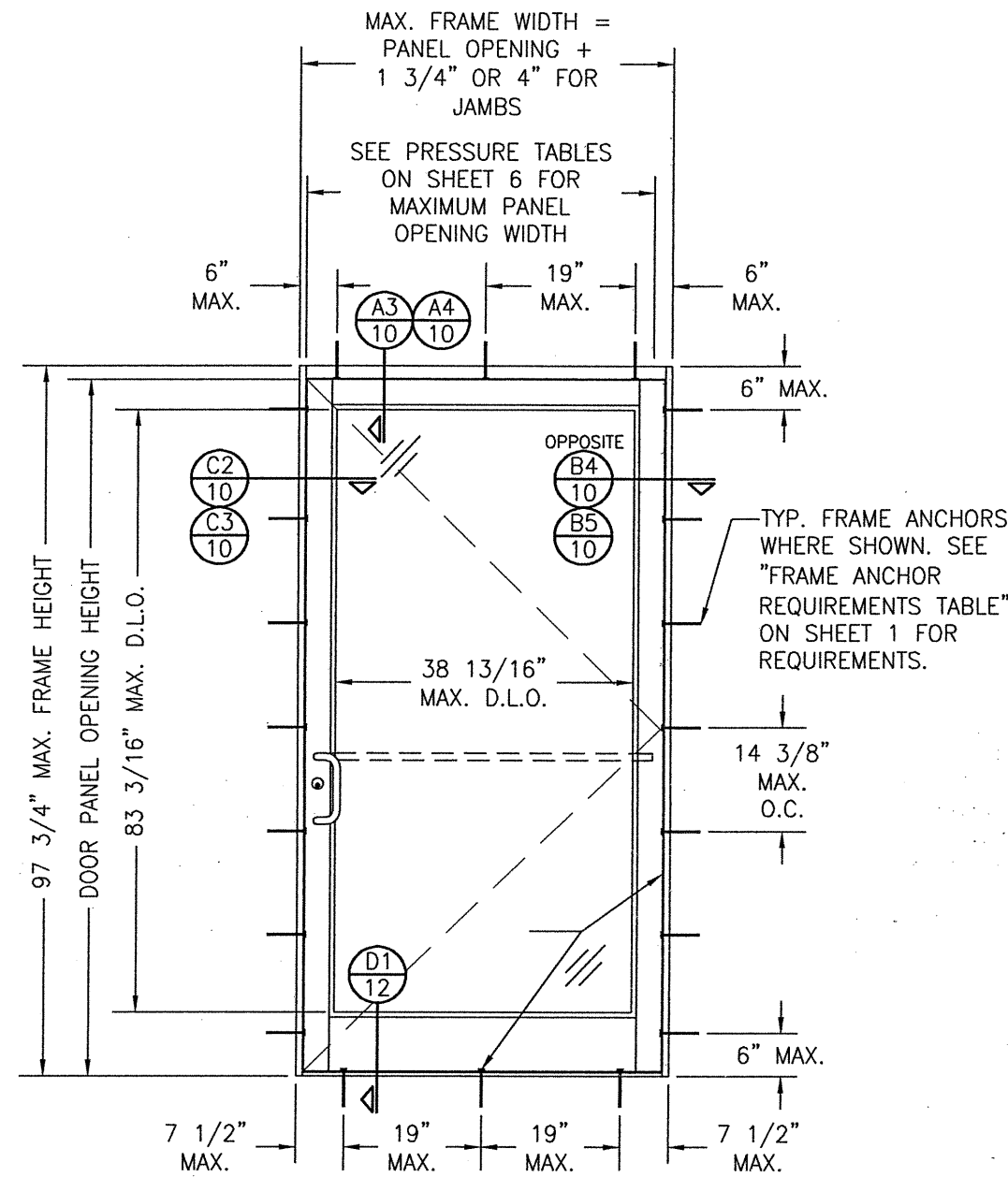


**EXTERIOR ELEVATION:  
DOUBLE DOOR WITH TRIFAB 450/451  
FRAMING & STANDARD INSTALLATION**

SCALE: 1/2" = 1'-0"  
(INCLUDES USE OF THE 450/451 JAMB OR THE  
1600 JAMB ADAPTOR)  
(APPLICABLE WITH ALL HINGE TYPES)

AT HEAD & SILL, CLUSTER ANCHORS AS SHOWN AT MEETING STILE ENDS SPACED 3" APART. CLUSTER 6 ANCHORS WITH ANCHOR TYPE A; CLUSTER 5 ANCHORS WITH ANCHOR TYPES B, C, D & F (ANCHOR "E" IS NOT APPLICABLE AT HEAD & SILL).

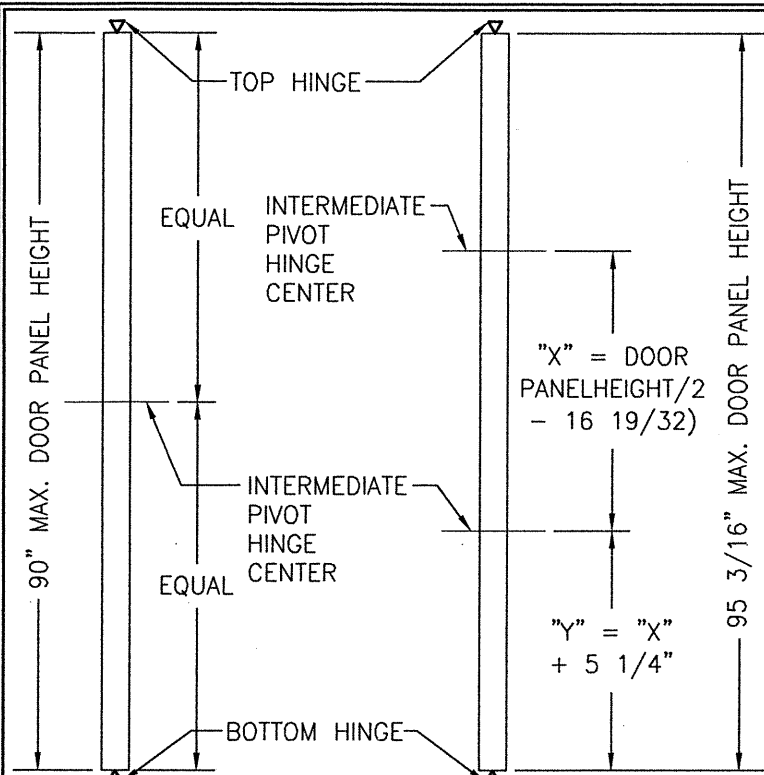
ALLOWABLE DESIGN PRESSURE  
SEE SHEETS 6 & 7



**EXTERIOR ELEVATION:  
SINGLE DOOR WITH TRIFAB 450/451  
FRAMING & STANDARD INSTALLATION**

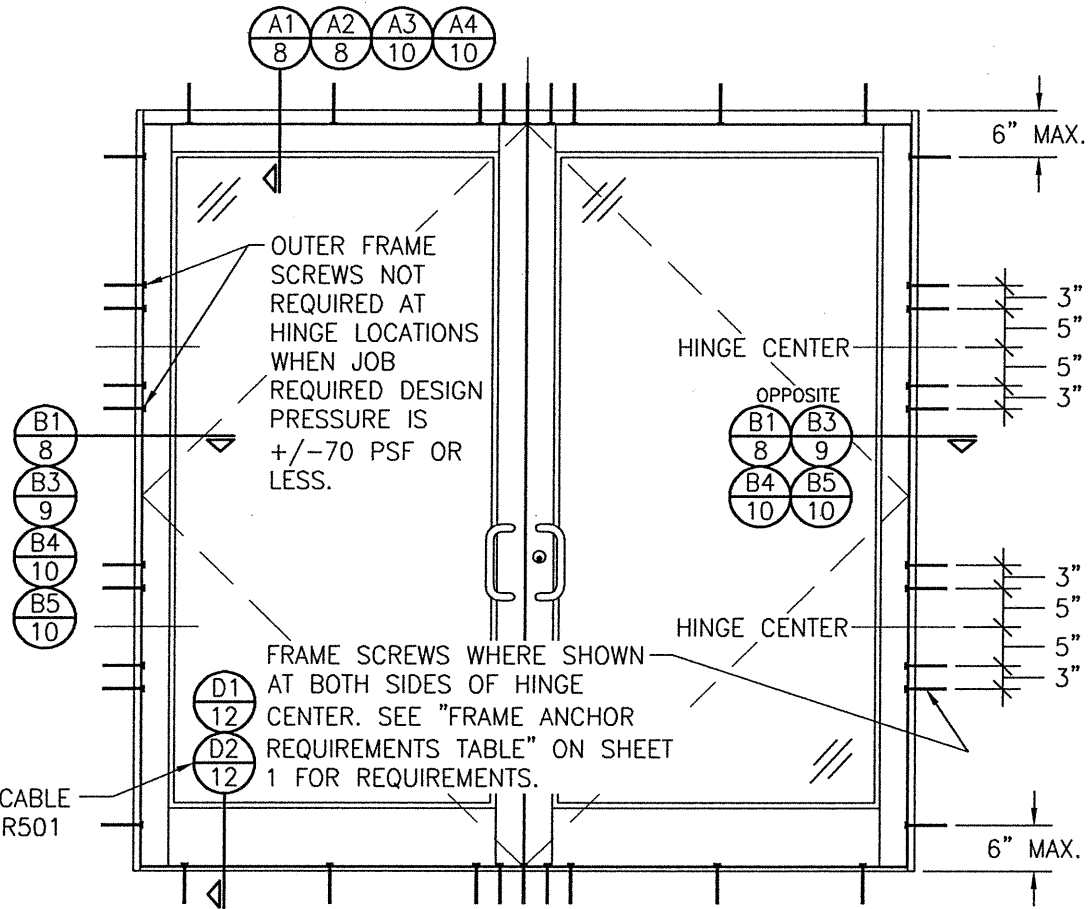
SCALE: 1/2" = 1'-0"  
(INCLUDES USE OF THE 450/451 JAMB OR THE  
1600 JAMB ADAPTOR)  
(APPLICABLE WITH ALL HINGE TYPES)

|                                                                                                                                                                                                                                                                                                                                         |                                                           |
|-----------------------------------------------------------------------------------------------------------------------------------------------------------------------------------------------------------------------------------------------------------------------------------------------------------------------------------------|-----------------------------------------------------------|
| DRAWN BY:<br>W.R.M.                                                                                                                                                                                                                                                                                                                     | CHECKED BY:<br>W.W.S.                                     |
| PLOT:<br>1=24                                                                                                                                                                                                                                                                                                                           | DATE:<br>11/10/05                                         |
| NO.                                                                                                                                                                                                                                                                                                                                     | REVISION DESCRIPTION                                      |
| DATE                                                                                                                                                                                                                                                                                                                                    | BY                                                        |
| DRAWING TITLE: 350/500IR OUTSWING ALUMINUM STOREFRONT DOORS - LMI WET GLAZED<br>MANUFACTURER: KAWNEER COMPANY, INC.<br>555 GUTHRIE COURT<br>NORCROSS, GA 30092<br>770-449-5555<br>CONSULTANTS: W. W. SCHAEFER ENGINEERING & CONSULTING, P.A. (CA 6809)<br>7480 150TH COURT NORTH<br>PALM BEACH GARDENS, FL 33418<br>PHONE: 561-744-3424 |                                                           |
| CERTIFICATION                                                                                                                                                                                                                                                                                                                           | AUG 05 2021<br>WARREN W. SCHAEFER, P.E.<br>P.E. NO. 44135 |
| DRAWING NO.<br>1460                                                                                                                                                                                                                                                                                                                     | REV.<br>H                                                 |
| SHEET NO.<br>3                                                                                                                                                                                                                                                                                                                          | OF 15                                                     |



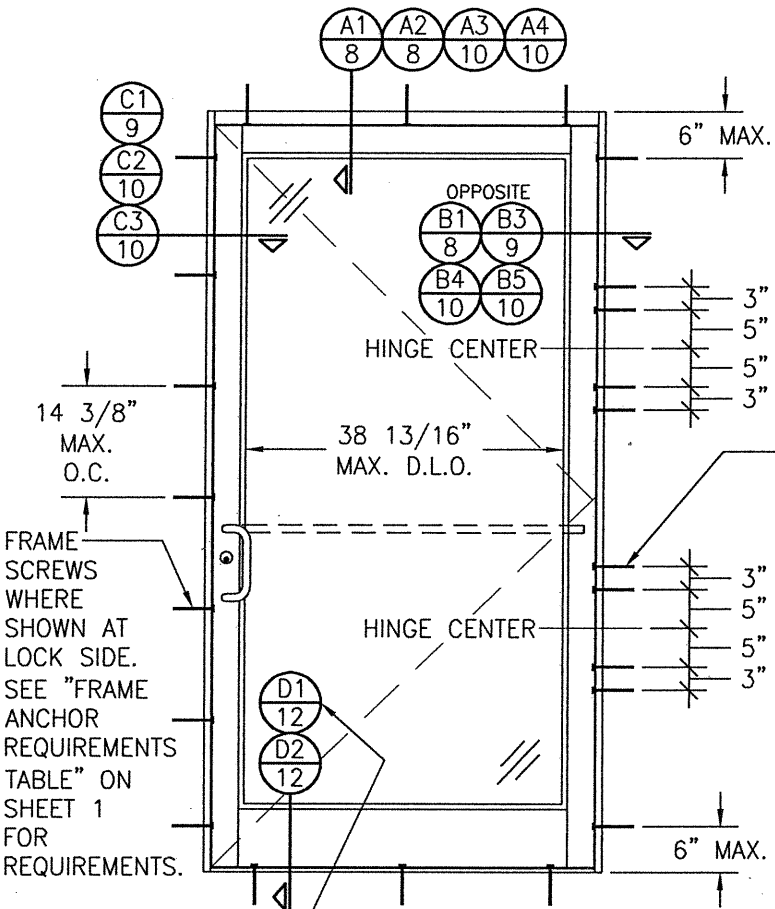
**PIVOT HINGE LOCATION DIAGRAMS**  
(APPLICABLE TO ALL DOORS)

D2 IS APPLICABLE ONLY WITH IR501 DOORS.



**EXTERIOR ELEVATION: DOUBLE DOOR WITH ALTERNATE INSTALLATION CONDITION**

SCALE: 1/2" = 1'-0"  
(APPLICABLE WITH BUTT & PIVOT HINGE DOORS ONLY)  
(FOR DOOR DETAIL & HARDWARE NOT SHOWN, SEE ELEVATIONS ON SHEETS 2 & 3)  
(ELEVATION SHOWN WITH TRIFAB 450/451 FRAMING. IR500/501 FRAMING ALSO APPLIES)

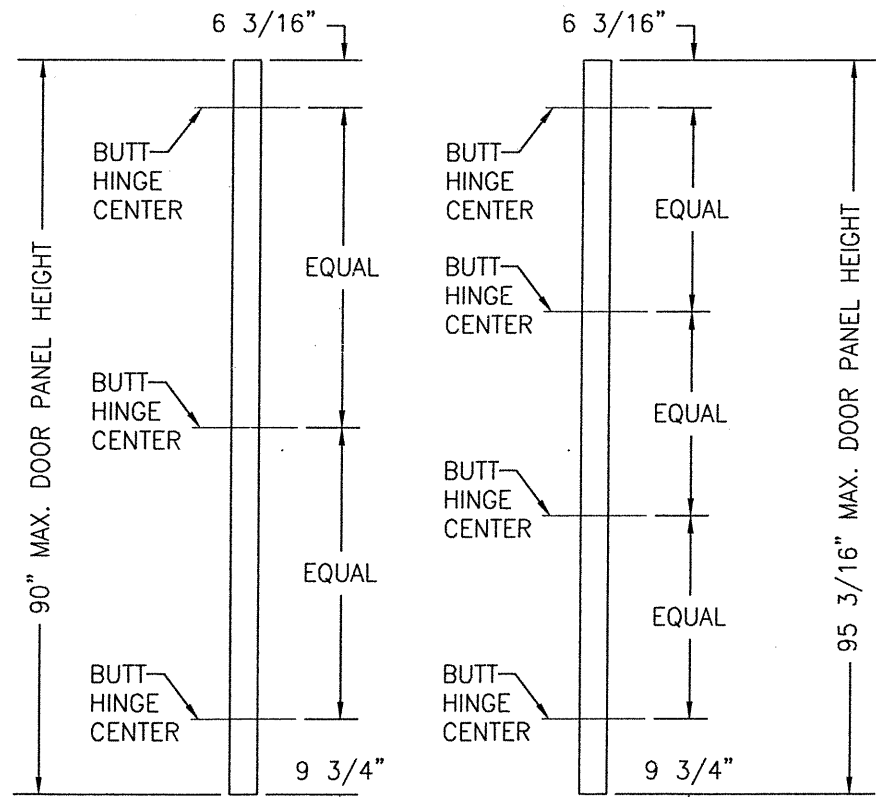


**EXTERIOR ELEVATION: SINGLE DOOR WITH ALTERNATE INSTALLATION CONDITION**

SCALE: 1/2" = 1'-0"  
(APPLICABLE WITH BUTT & PIVOT HINGE DOORS ONLY)  
(FOR DOOR DETAIL & HARDWARE NOT SHOWN, SEE ELEVATIONS ON SHEETS 2 & 3)  
(ELEVATION SHOWN WITH TRIFAB 450/451 FRAMING. IR500/501 FRAMING ALSO APPLIES)

FRAME SCREWS WHERE SHOWN AT BOTH SIDES OF HINGE CENTER. SEE "FRAME ANCHOR REQUIREMENTS TABLE" ON SHEET 1 FOR REQUIREMENTS. NOTE: OUTER FRAME SCREWS NOT REQUIRED AT HINGE LOCATIONS WHEN JOB REQUIRED DESIGN PRESSURE IS +/- 70 PSF OR LESS & PANELS HAVE 4 HINGES.

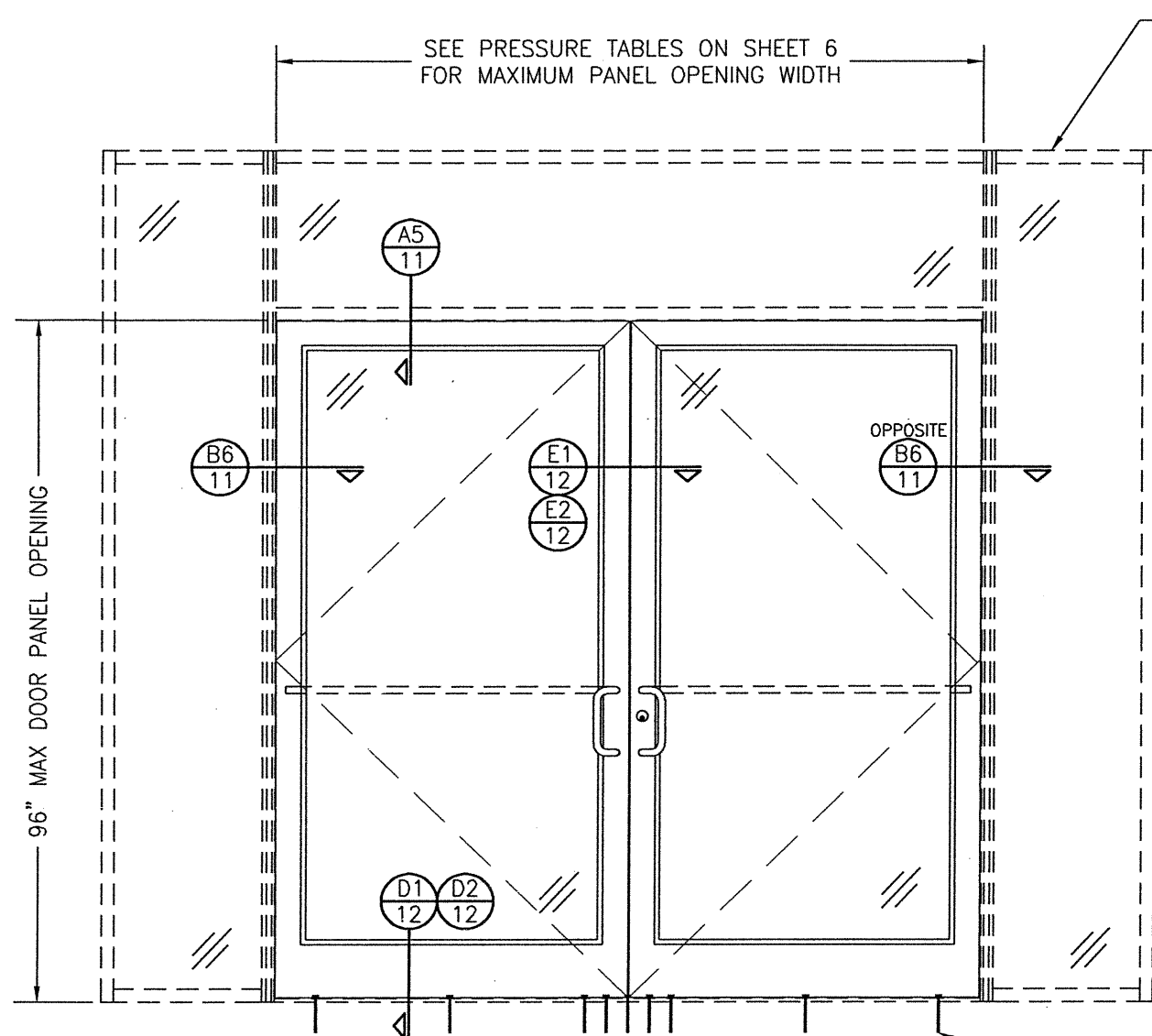
D2 IS APPLICABLE ONLY WITH IR501 DOORS.



**BUTT HINGE LOCATION DIAGRAMS**  
(APPLICABLE TO ALL DOORS)

**ALLOWABLE DESIGN PRESSURE**  
SEE SHEETS 6 & 7

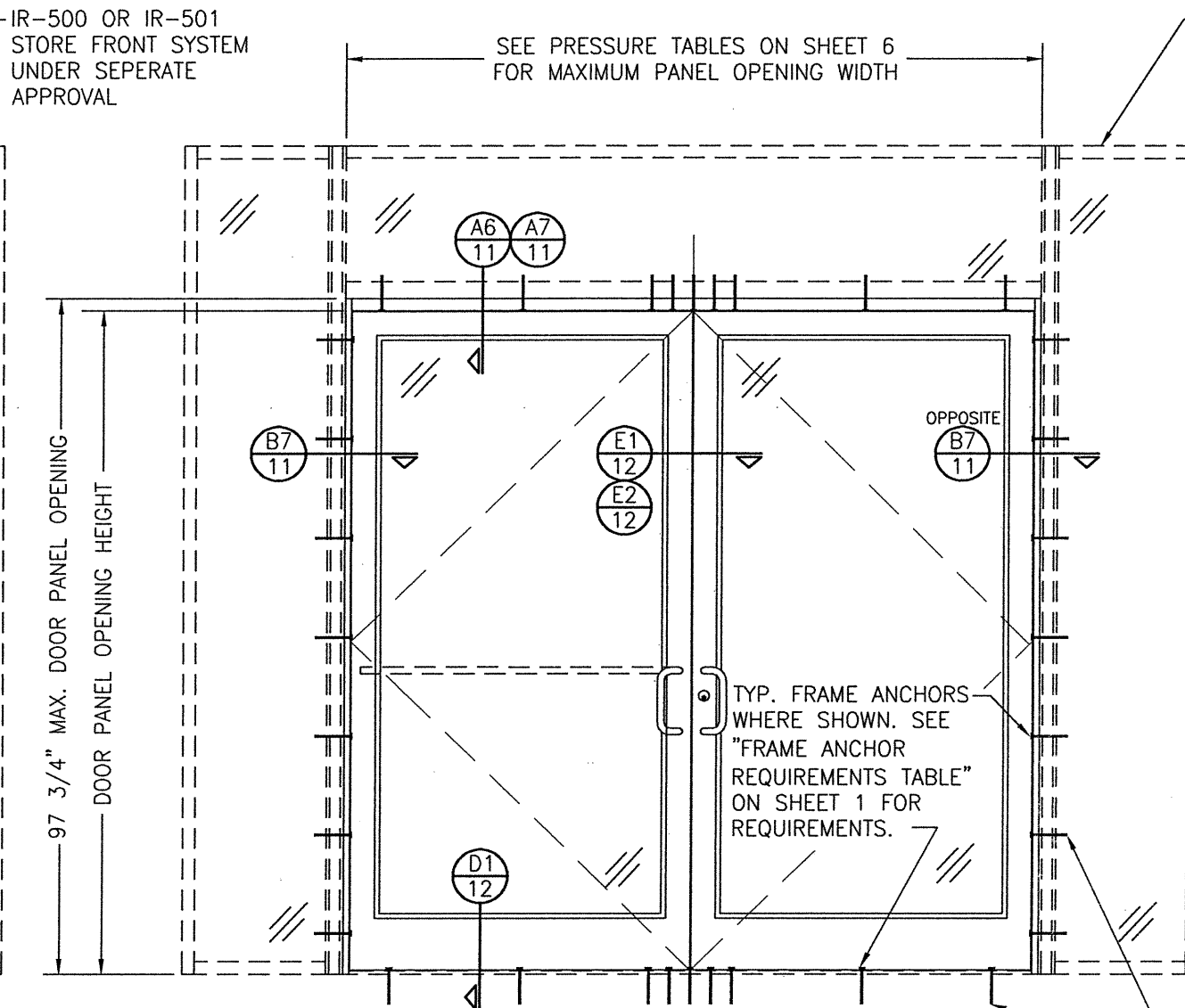
|                                                                                                                                                          |                                                                                                     |
|----------------------------------------------------------------------------------------------------------------------------------------------------------|-----------------------------------------------------------------------------------------------------|
| DRAWN BY:<br>W.R.M.                                                                                                                                      | CHECKED BY:<br>W.W.S.                                                                               |
| PLOT:<br>1=24                                                                                                                                            | DATE:<br>11/10/05                                                                                   |
| DATE                                                                                                                                                     | BY                                                                                                  |
| NO.                                                                                                                                                      | REVISION DESCRIPTION                                                                                |
| DRAWING TITLE: 350/500IR OUTSWING ALUMINUM STOREFRONT DOORS - LMI WET GLAZED                                                                             |                                                                                                     |
| CONSULTANTS:<br>W. W. SCHAEFER ENGINEERING & CONSULTING, P.A. (CA 6809)<br>7480 150TH COURT NORTH<br>PALM BEACH GARDENS, FL 33418<br>PHONE: 561-744-3424 | MANUFACTURER:<br>KAWNEER COMPANY, INC.<br>555 GUTHRIDGE COURT<br>NORCROSS, GA 30092<br>770-449-5555 |
| CERTIFICATION:<br>AUG 05 2021<br>WARREN W. SCHAEFER, P.E.<br>P.E. NO. 44135                                                                              |                                                                                                     |
| DRAWING NO.<br>1460                                                                                                                                      | REV.<br>H                                                                                           |
| SHEET NO.<br>4 OF 15                                                                                                                                     |                                                                                                     |



**EXTERIOR ELEVATION:**  
**DOORS INSIDE IR-500 OR IR-501 STORE FRONT SYSTEM**  
 SCALE: 1/2"=1'-0"

**NOTES:**

1. FOR DETAILS NOT SHOWN, SEE ELEVATIONS ON SHEETS 2 & 4.
2. DOUBLE DOOR SHOWN; SINGLE DOOR CONDITION ALSO APPLIES.
3. FOR STORE FRONT FRAMING REQUIREMENTS & INSTALLATION, SEE RESPECTIVE STORE FRONT APPROVAL.
4. LESSER ALLOWABLE PRESSURE RATING OF THE DOORS & STOREFRONT SHALL CONTROL FOR THE OVERALL ASSEMBLY.



**EXTERIOR ELEVATION:**  
**DOORS INSIDE 1600 SYSTEM 1 CURTAIN WALL**  
 SCALE: 1/2"=1'-0"

**NOTES:**

1. FOR DETAILS NOT SHOWN, SEE ELEVATIONS ON SHEETS 3 & 4.
2. DOUBLE DOOR SHOWN; SINGLE DOOR CONDITION ALSO APPLIES.
3. FOR STORE FRONT FRAMING REQUIREMENTS & INSTALLATION, SEE RESPECTIVE STORE FRONT APPROVAL.
4. LESSER ALLOWABLE PRESSURE RATING OF THE DOORS & STOREFRONT SHALL CONTROL FOR THE OVERALL ASSEMBLY.

**ALLOWABLE DESIGN PRESSURE**  
 SEE SHEETS 6 & 7

IR-500 OR IR-501  
 STORE FRONT SYSTEM  
 UNDER SEPERATE  
 APPROVAL

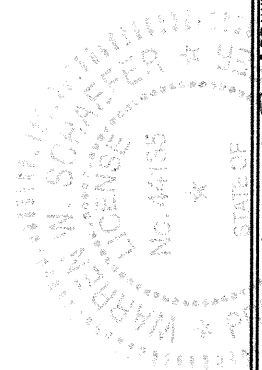
SEE PRESSURE TABLES ON SHEET 6  
 FOR MAXIMUM PANEL OPENING WIDTH

1600 SYSTEM 1  
 CURTAIN WALL  
 UNDER  
 SEPERATE  
 APPROVAL

TYP. FRAME ANCHORS  
 WHERE SHOWN. SEE  
 "FRAME ANCHOR  
 REQUIREMENTS TABLE"  
 ON SHEET 1 FOR  
 REQUIREMENTS.

SEE ELEVATION  
 SHEET 2 FOR SILL  
 ANCHOR  
 REQUIREMENTS &  
 ANCHOR LOCATIONS

SEE ELEVATION  
 SHEET 3 FOR  
 ANCHOR  
 REQUIREMENTS  
 & ANCHOR  
 LOCATIONS



|                                                                                                                                                         |                      |                                                                                                    |    |
|---------------------------------------------------------------------------------------------------------------------------------------------------------|----------------------|----------------------------------------------------------------------------------------------------|----|
| DRAWN BY:<br>W.R.M.                                                                                                                                     |                      | CHECKED BY:<br>W.W.S.                                                                              |    |
| PLOT:<br>1=24                                                                                                                                           |                      | DATE:<br>11/10/05                                                                                  |    |
| NO.                                                                                                                                                     | REVISION DESCRIPTION | DATE                                                                                               | BY |
|                                                                                                                                                         |                      |                                                                                                    |    |
| DRAWING TITLE: 350/500IR OUTSWING ALUMINUM STOREFRONT DOORS - LMI WET GLAZED                                                                            |                      |                                                                                                    |    |
| CONSULTANTS<br>W. W. SCHAEFER ENGINEERING & CONSULTING, P.A. (CA 6809)<br>7480 150TH COURT NORTH<br>PALM BEACH GARDENS, FL 33418<br>PHONE: 561-744-3424 |                      | MANUFACTURER<br>KAWNEER COMPANY, INC.<br>555 GUTHRIDGE COURT<br>NORCROSS, GA 30092<br>770-449-5555 |    |
| CERTIFICATION<br>AUG 05 2021<br>WARREN W. SCHAEFER, P.E.<br>P.E. NO. 44135                                                                              |                      | DRAWING NO. 1460<br>SHEET NO. 5 OF 15                                                              |    |



| ALLOWABLE DESIGN PRESSURE<br>(AS RESTRICTED BY PANIC DEVICE LOCK CONDITIONS) |                |                           |                                   |
|------------------------------------------------------------------------------|----------------|---------------------------|-----------------------------------|
| MAXIMUM DOOR PANEL<br>OPENING WIDTH<br>(IN.)                                 |                | PANIC DEVICE              | ALLOWABLE<br>PRESSURE<br>(+/-PSF) |
| DOUBLE<br>DOOR                                                               | SINGLE<br>DOOR |                           |                                   |
| 96                                                                           | 48             | SARGENT AD8400            | 70                                |
| 96                                                                           | 48             | ADAMS RITE G86            | 70                                |
| 96                                                                           | 48             | CALIBRE 9100              | 70                                |
| 96                                                                           | 48             | VON DUPRIN HH9947         | 65                                |
| 96                                                                           | 48             | JACKSON 2086              | 90                                |
| 84                                                                           | 42             | KAWNEER 1686              | 90                                |
| 96                                                                           | 48             |                           | 70                                |
| 96                                                                           | 48             | PANELINE CR-90            | 70                                |
| 96                                                                           | 48             | SARGENT 8400              | 65                                |
| 96                                                                           | 48             | CORBIN RUSSWIN ED5200S(A) | 50                                |
| 72                                                                           | 36             | FALCON HH1690             | 65                                |

| ALLOWABLE DESIGN PRESSURE<br>(AS RESTRICTED BY MULTI-POINT<br>LOCK CONDITIONS) |                |                |                                   |
|--------------------------------------------------------------------------------|----------------|----------------|-----------------------------------|
| MAXIMUM DOOR PANEL<br>OPENING WIDTH<br>(IN.)                                   |                | LOCK CONDITION | ALLOWABLE<br>PRESSURE<br>(+/-PSF) |
| DOUBLE<br>DOOR                                                                 | SINGLE<br>DOOR |                |                                   |
| 96                                                                             | 48             | 1              | 70                                |
| 84                                                                             | 42             | 1              | 90                                |
| 96                                                                             | 48             | 2              | 90                                |

**LOCK CONDITION 1:**  
ACTIVE DOOR: SEE ITEM #39 ON SHEET 15 FOR LOCK REQUIREMENTS  
INACTIVE DOOR: SEE ITEM #40 ON SHEET 15 FOR LOCK REQUIREMENTS

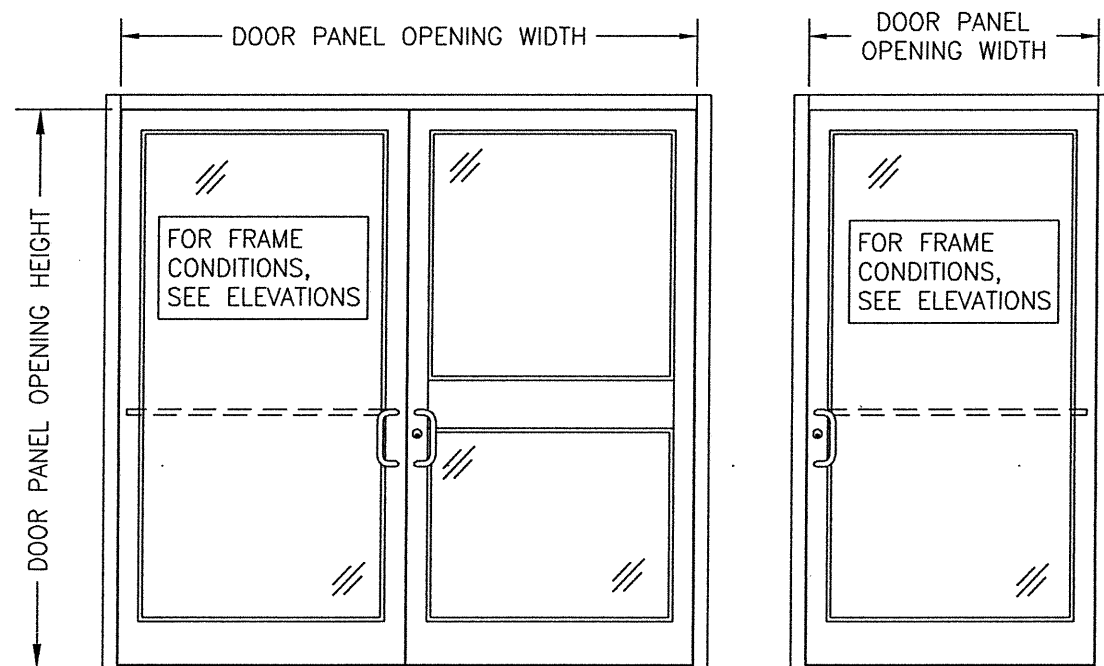
**LOCK CONDITION 2:**  
ACTIVE DOOR: SEE ITEM #41 ON SHEET 15 FOR LOCK REQUIREMENTS  
INACTIVE DOOR: SEE ITEM #42 ON SHEET 15 FOR LOCK REQUIREMENTS

| ALLOWABLE DESIGN PRESSURE<br>(AS RESTRICTED BY BUTT<br>& PIVOT HINGE QUANTITY) |                                   |
|--------------------------------------------------------------------------------|-----------------------------------|
| HINGE<br>QUANTITY<br>PER PANEL                                                 | ALLOWABLE<br>PRESSURE<br>(+/-PSF) |
| 3                                                                              | 70                                |
| 4                                                                              | 90                                |

NOTE: 3 HINGES PER DOOR PANEL IS ONLY APPLICABLE WITH DOOR OPENING PANEL HEIGHTS OF 90" & LESS

**PRESSURE TABLE NOTES (ALL TABLES)**

- CONDITIONS IN THESE TABLES ARE APPLICABLE FOR ALL DOORS TO THEIR MAXIMUM PANEL HEIGHT OF 96".
- SEE GLAZING DETAILS ON SHEET 7 FOR GLAZING DETAILS & GLASS OPTIONS APPLICABLE TO THESE TABLES.
- SEE ELEVATIONS ON THIS SHEET FOR VIEW OF DOOR PANEL OPENING HEIGHT & WIDTH.
- THE LESSER PRESSURE IN ANY ONE TABLE SHALL CONTROL AS THE ALLOWABLE PRESSURE ON THE DOOR ASSEMBLY.
- IF DOOR IS WATER RATED, THE POSITIVE DESIGN PRESSURE SHALL BE LIMITED TO +80 PSF. REFERENCE "WATER RATING NOTE" ON SHEET 1.



|                      |                       |
|----------------------|-----------------------|
| DRAWN BY:<br>W.R.M.  | CHECKED BY:<br>W.W.S. |
| PLOT:<br>1=24        | DATE:<br>11/10/05     |
| DATE                 | BY                    |
| REVISION DESCRIPTION |                       |
| NO.                  |                       |

DRAWING TITLE: 350/500IR OUTSWING ALUMINUM STOREFRONT DOORS - LMI WET GLAZED

CONSULTANTS: W. W. SCHAEFER ENGINEERING & CONSULTING, P.A. (CA 6809)  
7480 150TH COURT NORTH, PALM BEACH GARDENS, FL 33418  
PHONE: 561-744-3424

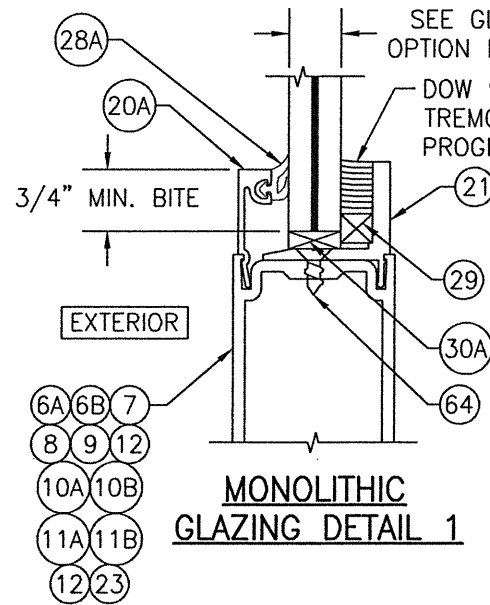
MANUFACTURER: KAWNEER COMPANY, INC.  
555 GUTHRIDGE COURT  
NORCROSS, GA 30092  
770-449-5555

CERTIFICATION: WARREN W. SCHAEFER, P.E.  
P.E. NO. 44135  
AUG 05 2021

DRAWING NO. 1460 REV. H  
SHEET NO. 6 OF 15

**ALLOWABLE DESIGN PRESSURE  
(AS RESTRICTED BY GLASS & GLAZING)**

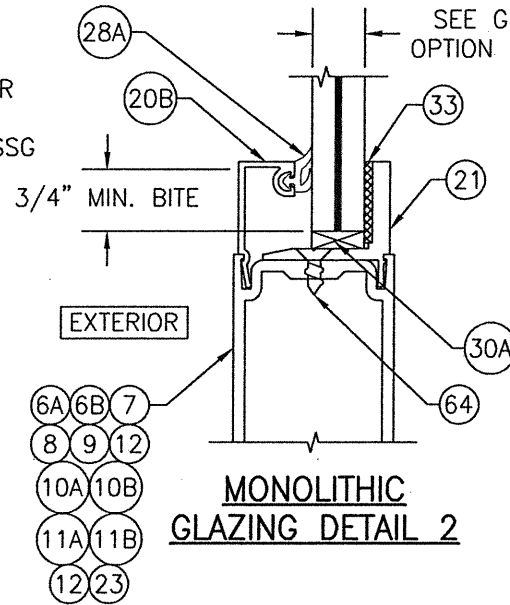
| MAXIMUM DOOR PANEL<br>OPENING WIDTH<br>(IN.) |                | APPLICABLE<br>GLAZING<br>DETAIL | APPLICABLE<br>GLASS<br>OPTIONS | ALLOWABLE<br>PRESSURE<br>(+/-PSF) |
|----------------------------------------------|----------------|---------------------------------|--------------------------------|-----------------------------------|
| DOUBLE<br>DOOR                               | SINGLE<br>DOOR |                                 |                                |                                   |
| 96                                           | 48             | 1                               | 1 & 2                          | 65                                |
| 96                                           | 48             | 2                               | 1, 2, 3 & 5                    | 70                                |
| 96                                           | 48             | 2 & 3                           | 4 & 6                          | 90                                |
| 96                                           | 48             | 3                               | 7 & 8                          | 60                                |
| 84                                           | 42             | 1                               | 3 & 4                          | 90                                |



**GLASS OPTIONS FOR GLAZING DETAIL 1:**

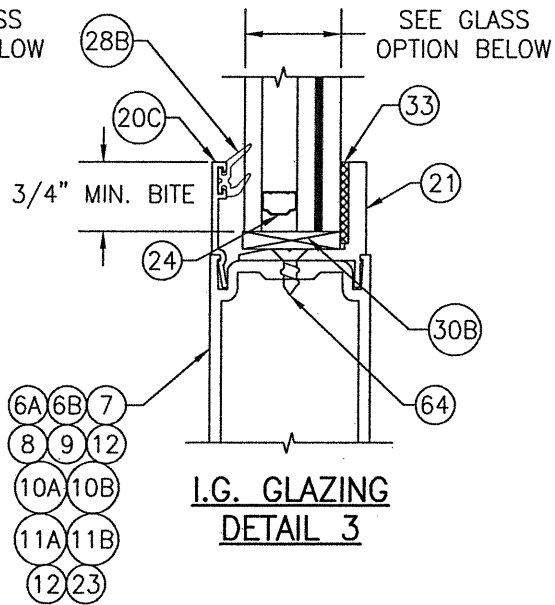
- OPTION 1: 9/16" THICK LAMINATED GLASS (1/4" HT. ST./0.090 EASTMAN CHEMICAL CO. SAFLEX/1/4" HT. ST.)
- OPTION 2: 9/16" THICK LAMINATED GLASS (1/4" HT. ST./0.09 KURARAY BUTICITE PVB/1/4" HT. ST.)
- OPTION 3: 9/16" THICK LAMINATED GLASS (1/4" HT. ST./0.09 KURARAY SG/1/4" HT. ST.)
- OPTION 4: 9/16" THICK LAMINATED GLASS (1/4" HT. ST./0.077" EASTMAN CHEMICAL CO. SAFLEX STORM/1/4" HT. ST.)

NOTE: KURARAY WAS PREVIOUSLY KNOWN AS DUPONT.



**GLASS OPTIONS FOR GLAZING DETAIL 2:**

- OPTION 1: 9/16" THICK LAMINATED GLASS (1/4" HT. ST./0.090 EASTMAN CHEMICAL CO. SAFLEX/1/4" HT. ST.)
- OPTION 2: 9/16" THICK LAMINATED GLASS (1/4" HT. ST./0.09 KURARAY BUTICITE PVB/1/4" HT. ST.)
- OPTION 3: 9/16" THICK LAMINATED GLASS (1/4" HT. ST./0.09 KURARAY SG/1/4" HT. ST.)
- OPTION 4: 9/16" THICK LAMINATED GLASS (1/4" HT. ST./0.077" EASTMAN CHEMICAL CO. SAFLEX STORM/1/4" HT. ST.)
- OPTION 5: 9/16" THICK LAMINATED GLASS (1/4" HT. ST./0.010" EASTMAN CHEMICAL CO. SAFLEX STORM/1/4" HT. ST.)



**GLASS OPTIONS FOR GLAZING DETAIL 3:**

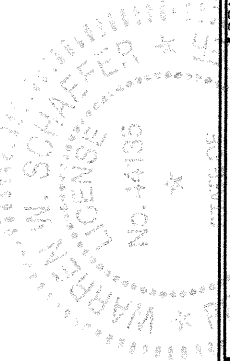
- OPTION 6: 1" THICK I.G. LAMINATED GLASS (3/16" TEMP EXTERIOR; 3/8" AIR SPACE; 3/16" HT. ST./0.090" KURARAY SG/3/16" HT. ST. INTERIOR)
- OPTION 7: 1" THICK I.G. LAMINATED GLASS (3/16" TEMP EXTERIOR; 3/8" AIR SPACE; 3/16" HT. ST./0.090" KURARAY BUTICITE PVB/3/16" HT. ST. INTERIOR)
- OPTION 8: 1" THICK I.G. LAMINATED GLASS (3/16" TEMP EXTERIOR; 3/8" AIR SPACE; 3/16" HT. ST./0.090" EASTMAN CHEMICAL CO. SAFLEX/3/16" HT. ST. INTERIOR)

|                      |                       |
|----------------------|-----------------------|
| DRAWN BY:<br>W.R.M.  | CHECKED BY:<br>W.W.S. |
| PLOT:<br>1=24        | DATE:<br>11/10/05     |
| DATE                 |                       |
| BY                   |                       |
| REVISION DESCRIPTION |                       |
| NO.                  |                       |

DRAWING TITLE: 350/500IR OUTSWING ALUMINUM STOREFRONT DOORS - LMI WET GLAZED

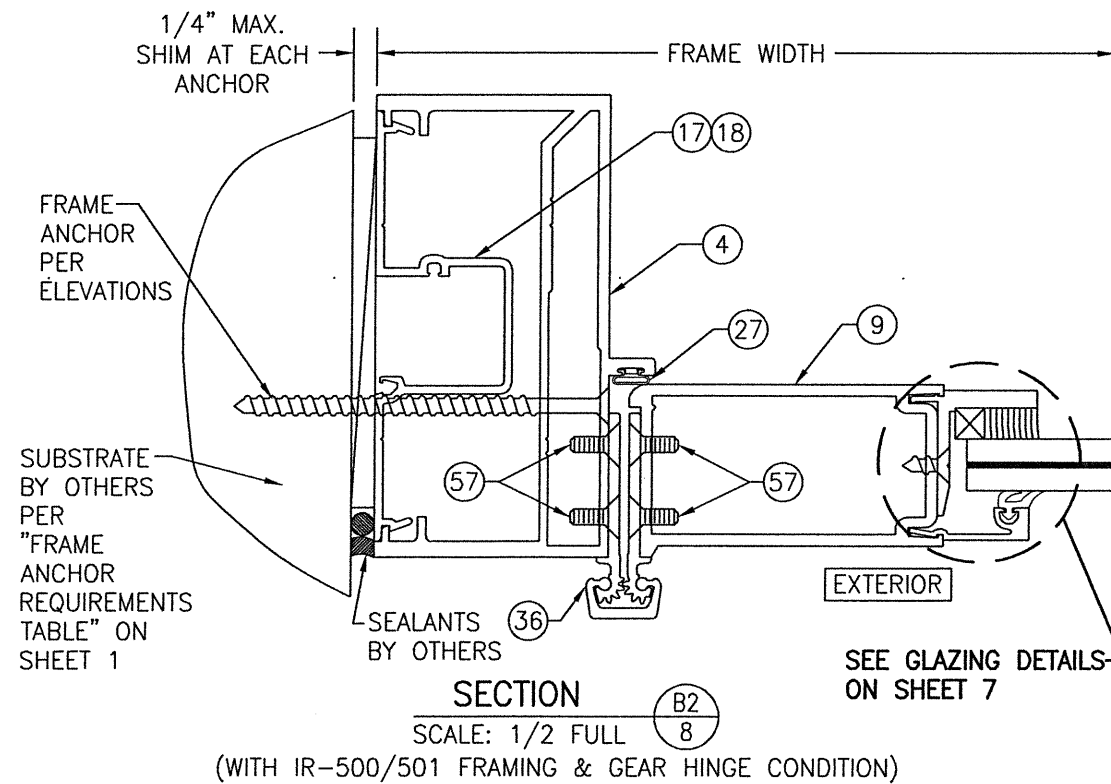
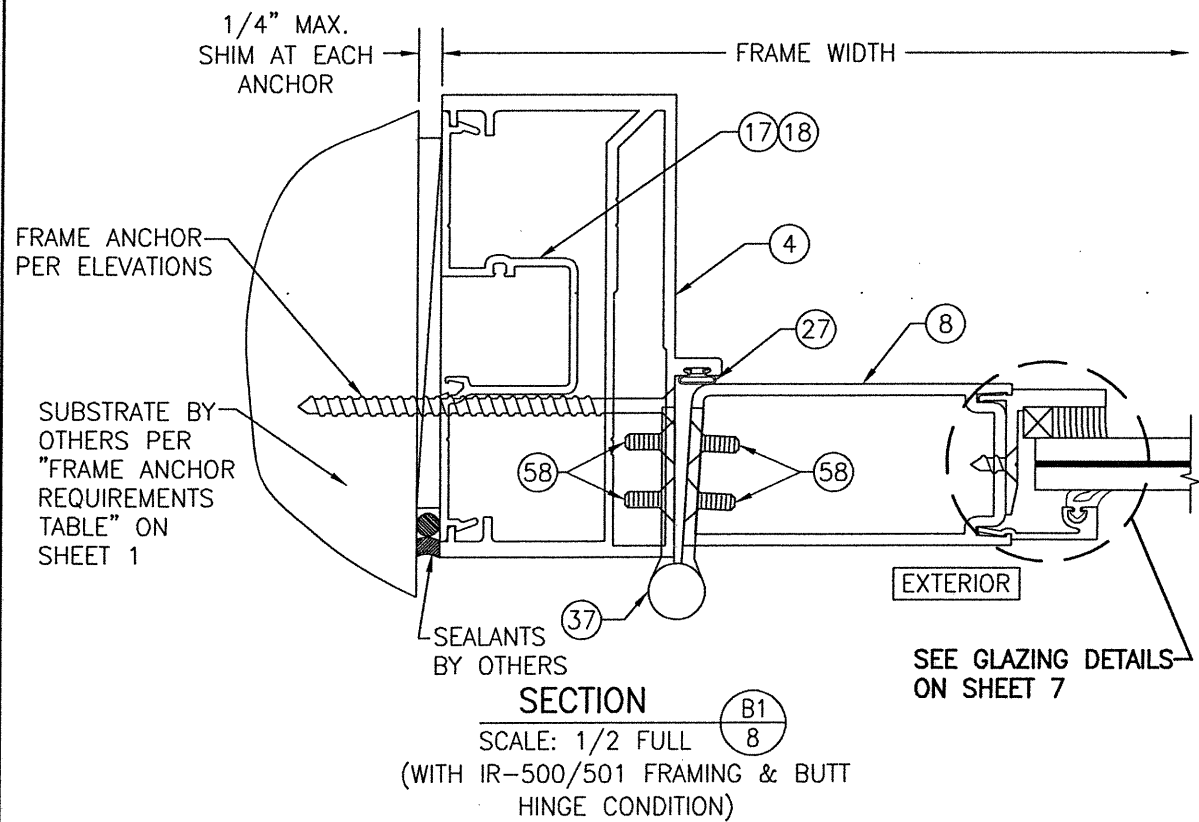
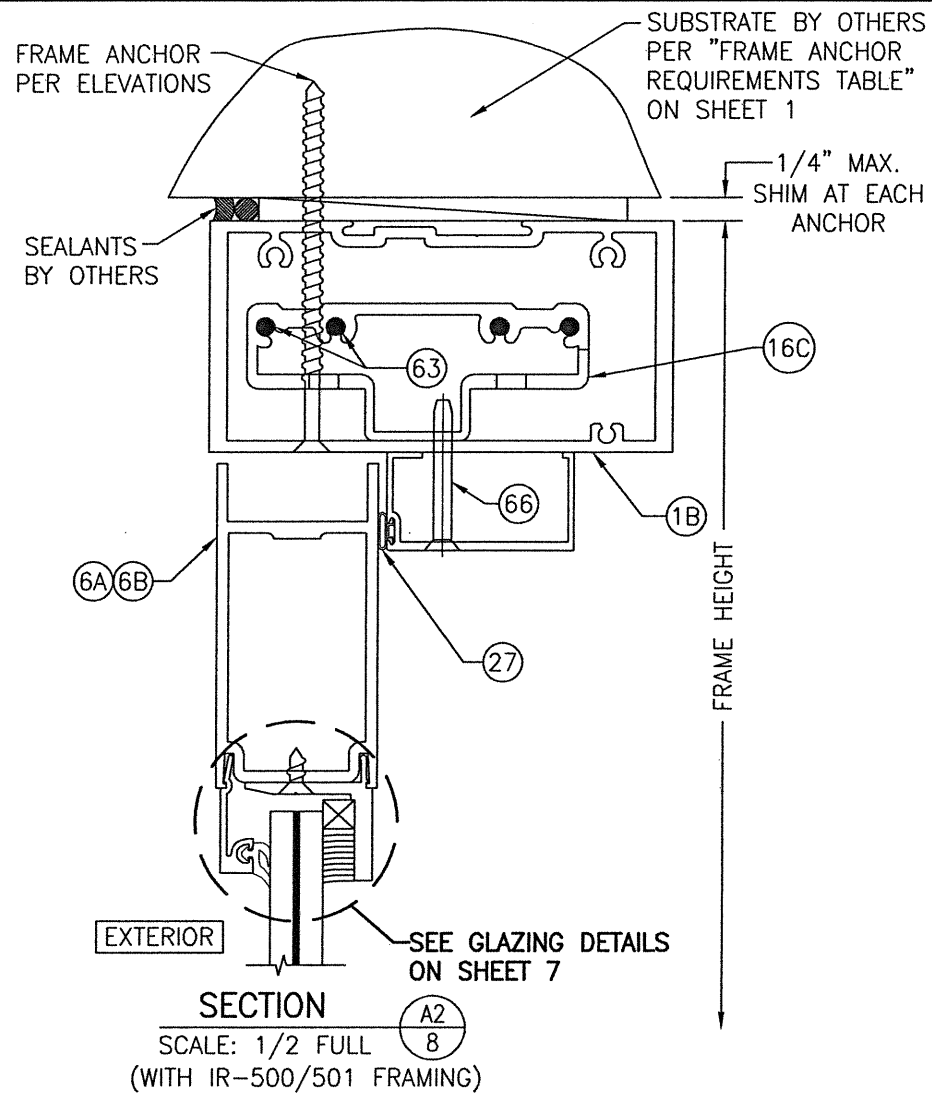
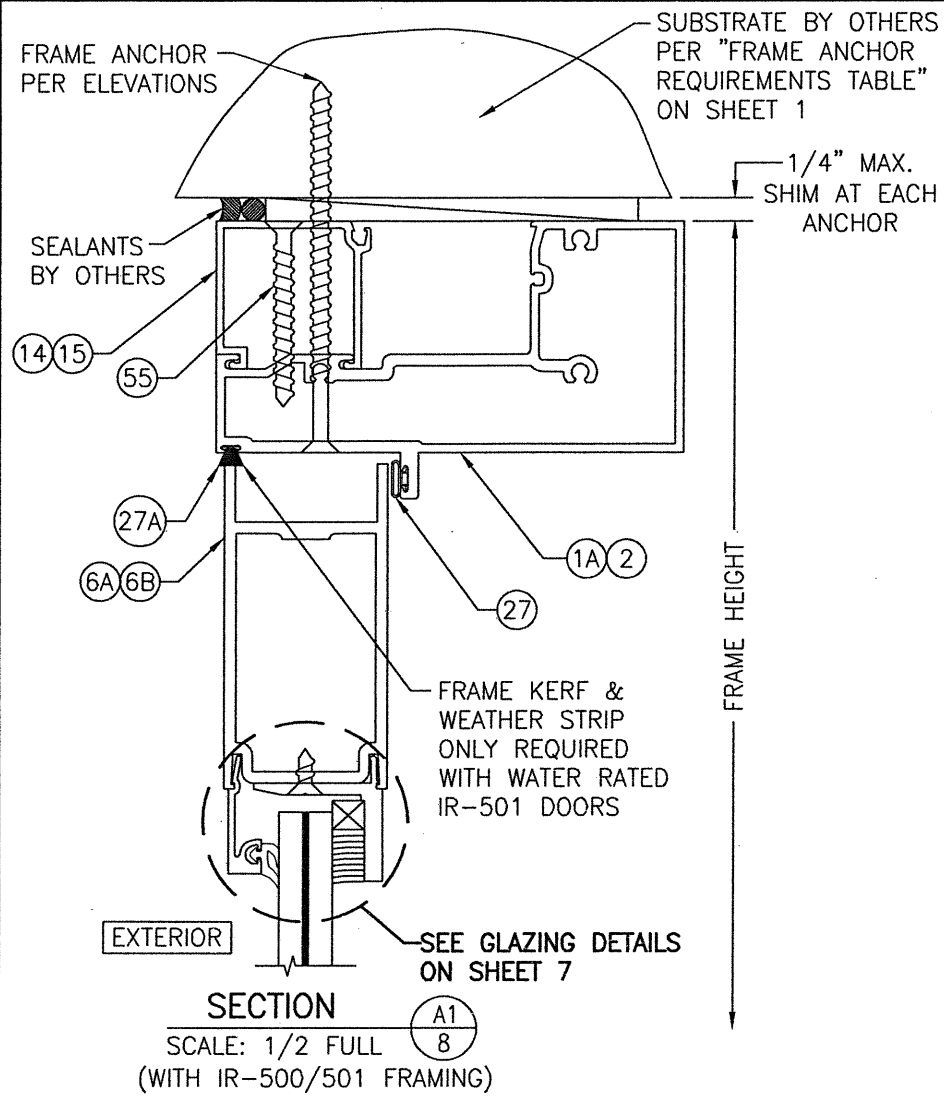
CONSULTANTS:  
**W. W. SCHAEFER ENGINEERING & CONSULTING, P.A. (CA 6809)**  
7480 150TH COURT NORTH  
PALM BEACH GARDENS, FL 33418  
PHONE: 561-744-3424

MANUFACTURER:  
**KAWNEER COMPANY, INC.**  
555 GUTHRIE COURT  
NORCROSS, GA 30092  
770-449-5555



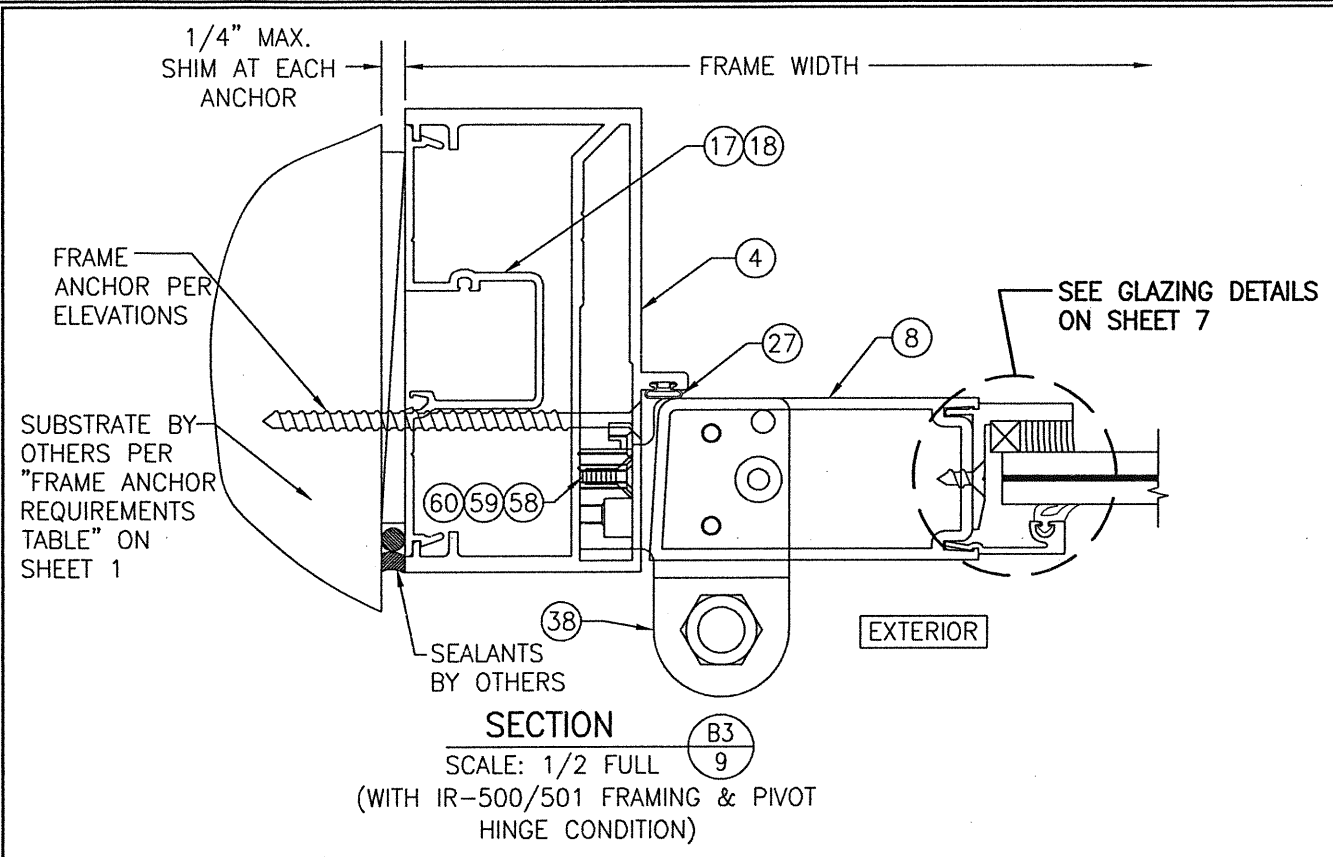
CERTIFICATION:  
AUG 05 2021  
WARREN W. SCHAEFER, P.E.  
P.E. NO. 44135

|                     |           |
|---------------------|-----------|
| DRAWING NO.<br>1460 | REV.<br>H |
| SHEET NO.<br>7      | OF 15     |

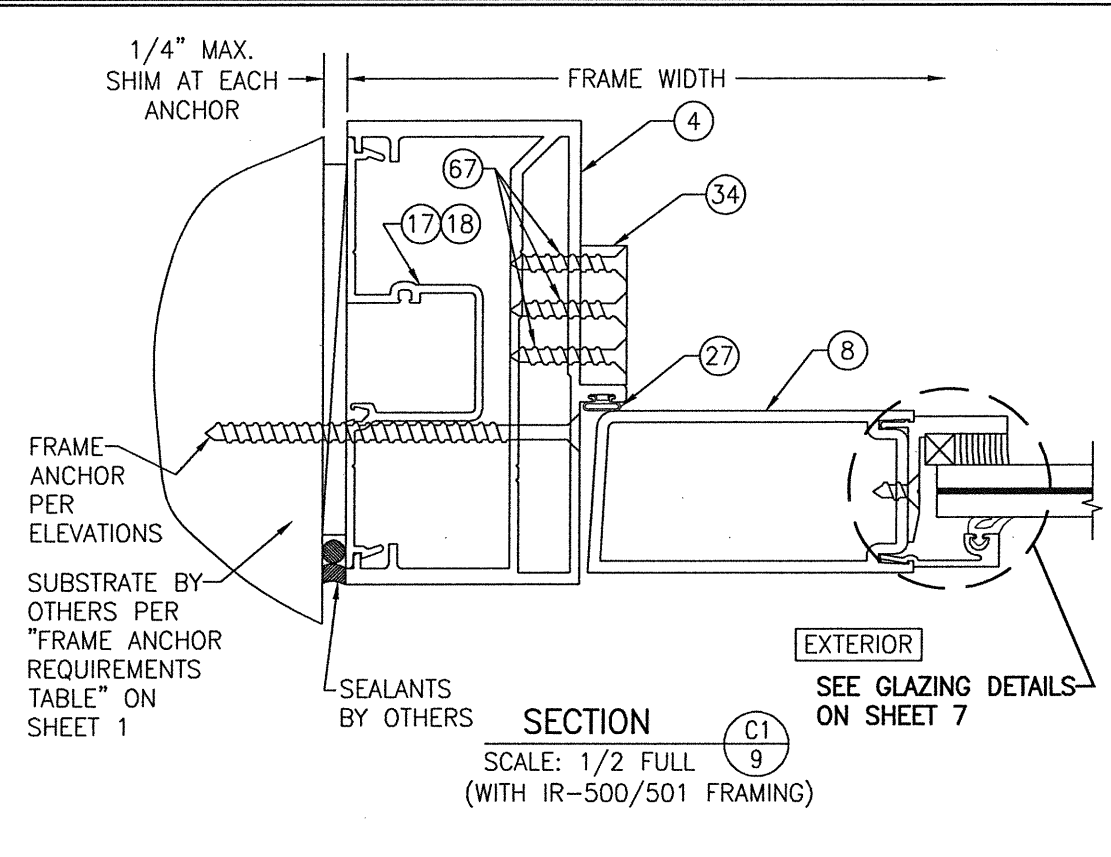


|                                                                                                                                                       |                                                           |
|-------------------------------------------------------------------------------------------------------------------------------------------------------|-----------------------------------------------------------|
| DRAWN BY:<br>W.R.M.                                                                                                                                   | CHECKED BY:<br>W.W.S.                                     |
|                                                                                                                                                       |                                                           |
| DATE                                                                                                                                                  | BY                                                        |
| REVISION DESCRIPTION                                                                                                                                  |                                                           |
| NO.                                                                                                                                                   |                                                           |
| DRAWING TITLE: 350/500IR OUTSWING ALUMINUM STOREFRONT DOORS - LMI WET GLAZED                                                                          |                                                           |
| MANUFACTURER: KAWNEER COMPANY, INC.<br>555 GUTHRIDGE COURT<br>NORCROSS, GA 30092<br>770-449-5555                                                      |                                                           |
| CONSULTANTS: W. W. SCHAEFER ENGINEERING & CONSULTING, P.A. (CA 6809)<br>7480 150TH COURT NORTH<br>PALM BEACH GARDENS, FL 33418<br>PHONE: 561-744-3424 |                                                           |
| CERTIFICATION                                                                                                                                         | AUG 05 2021<br>WARREN W. SCHAEFER, P.E.<br>P.E. NO. 44135 |
| DRAWING NO.                                                                                                                                           | REV.                                                      |
| 1460                                                                                                                                                  | H                                                         |
| SHEET NO.                                                                                                                                             |                                                           |
| 8                                                                                                                                                     | OF 15                                                     |





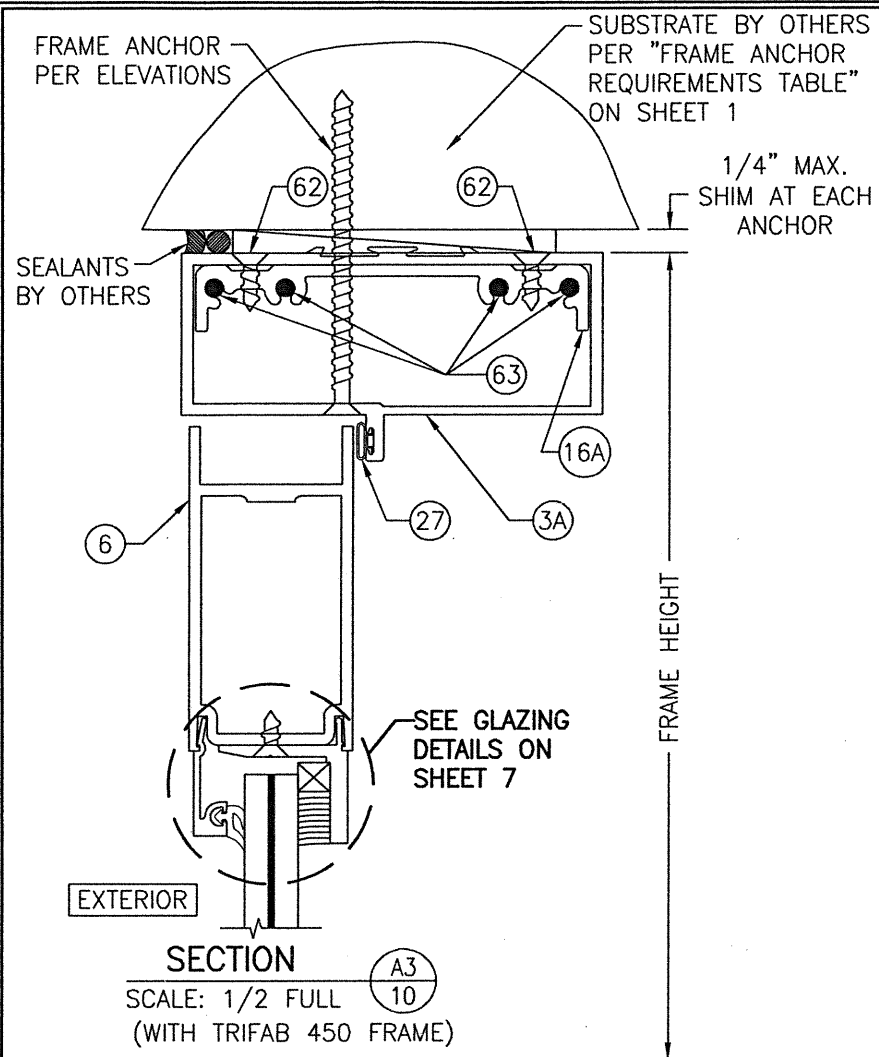
SECTION B3  
 SCALE: 1/2 FULL  
 (WITH IR-500/501 FRAMING & PIVOT HINGE CONDITION)



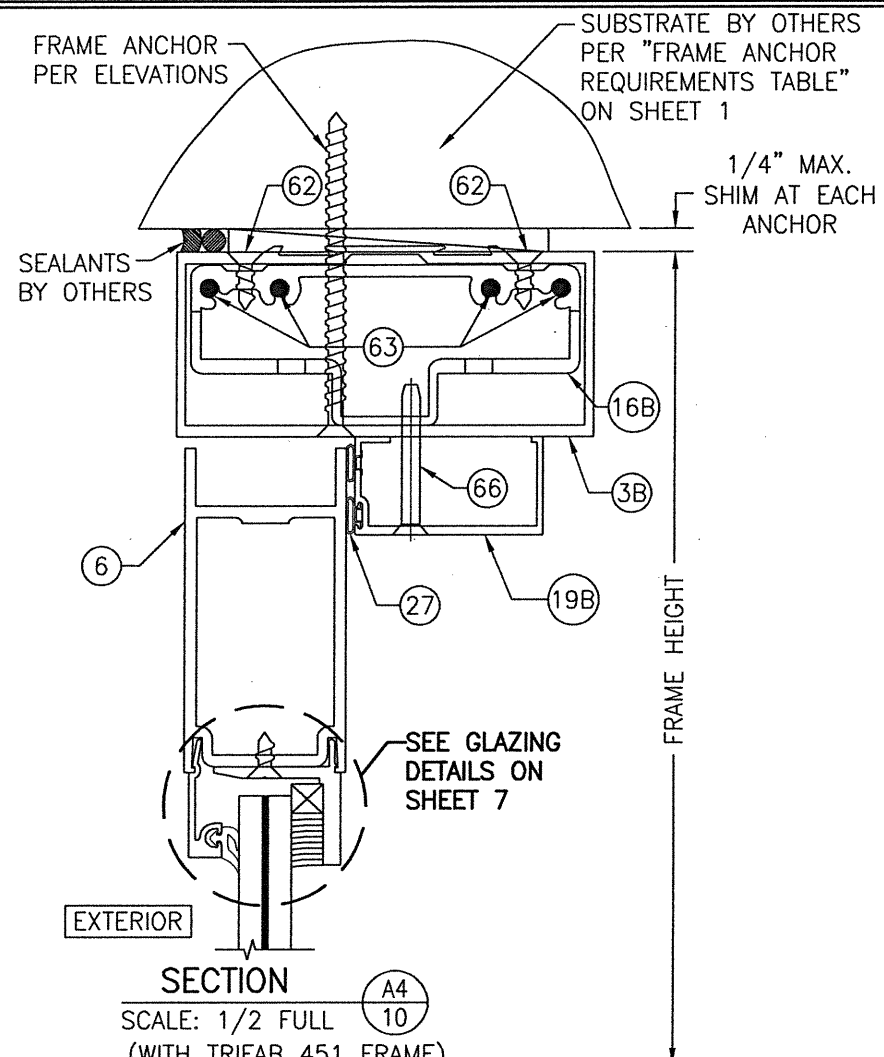
SECTION C1  
 SCALE: 1/2 FULL  
 (WITH IR-500/501 FRAMING)

|                                                                                                                                                         |    |                                                                                                    |     |
|---------------------------------------------------------------------------------------------------------------------------------------------------------|----|----------------------------------------------------------------------------------------------------|-----|
| DRAWN BY:<br>W.R.M.                                                                                                                                     |    | CHECKED BY:<br>W.W.S.                                                                              |     |
| PLOT:<br>1=2                                                                                                                                            |    | DATE:<br>11/10/05                                                                                  |     |
| DATE                                                                                                                                                    | BY | REVISION DESCRIPTION                                                                               | NO. |
|                                                                                                                                                         |    |                                                                                                    |     |
| DRAWING TITLE: 350/500IR OUTSWING ALUMINUM STOREFRONT DOORS - LMI WET GLAZED                                                                            |    |                                                                                                    |     |
| CONSULTANTS<br>W. W. SCHAEFER ENGINEERING & CONSULTING, P.A. (CA 6809)<br>7480 150TH COURT NORTH<br>PALM BEACH GARDENS, FL 33418<br>PHONE: 561-744-3424 |    | MANUFACTURER<br>KAWNEER COMPANY, INC.<br>555 GUTHRIDGE COURT<br>NORCROSS, GA 30092<br>770-449-5555 |     |
| CERTIFICATION<br>AUG 05 2021<br>WARREN W. SCHAEFER, P.E.<br>P.E. NO. 44135                                                                              |    | DRAWING NO. 1460<br>REV. H<br>SHEET NO. 9 OF 15                                                    |     |

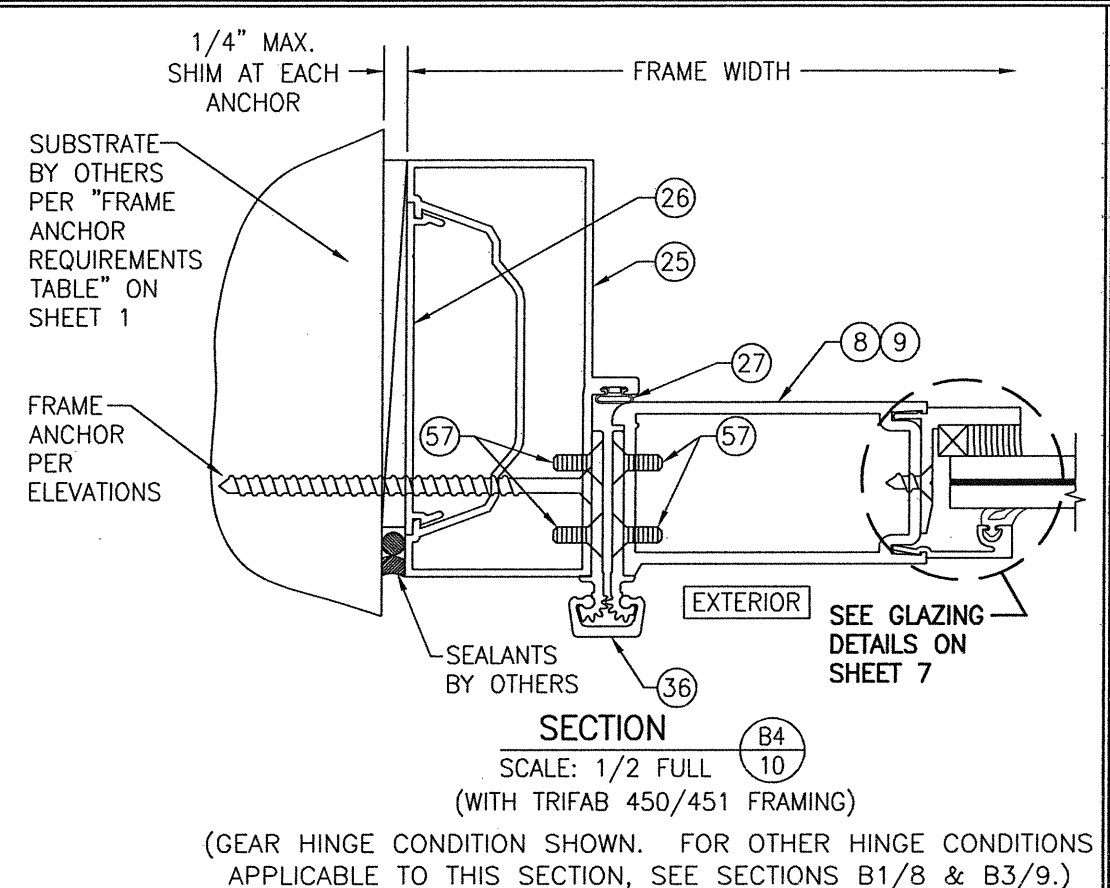




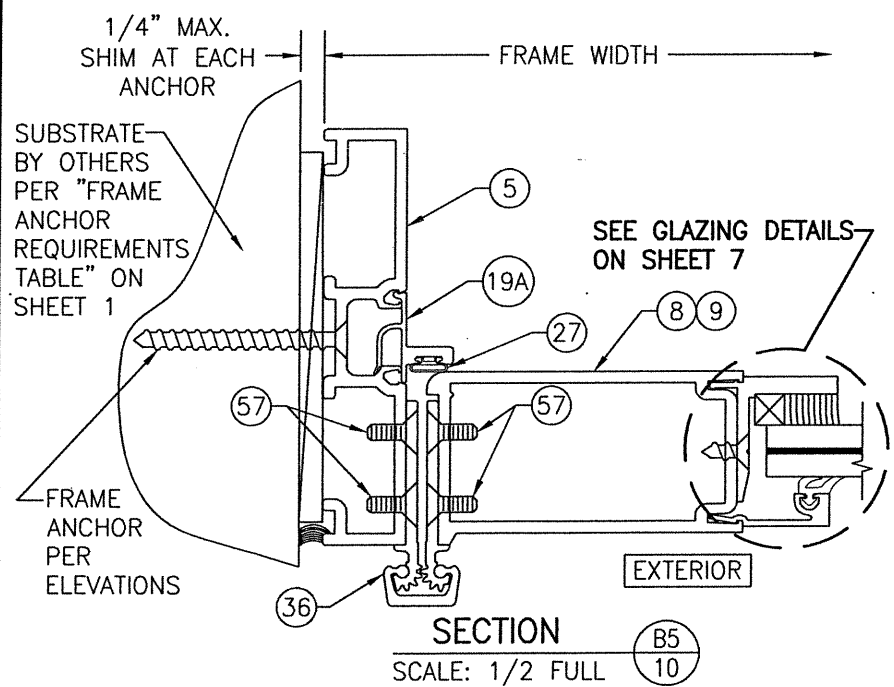
**SECTION A3**  
SCALE: 1/2 FULL  
(WITH TRIFAB 450 FRAME)



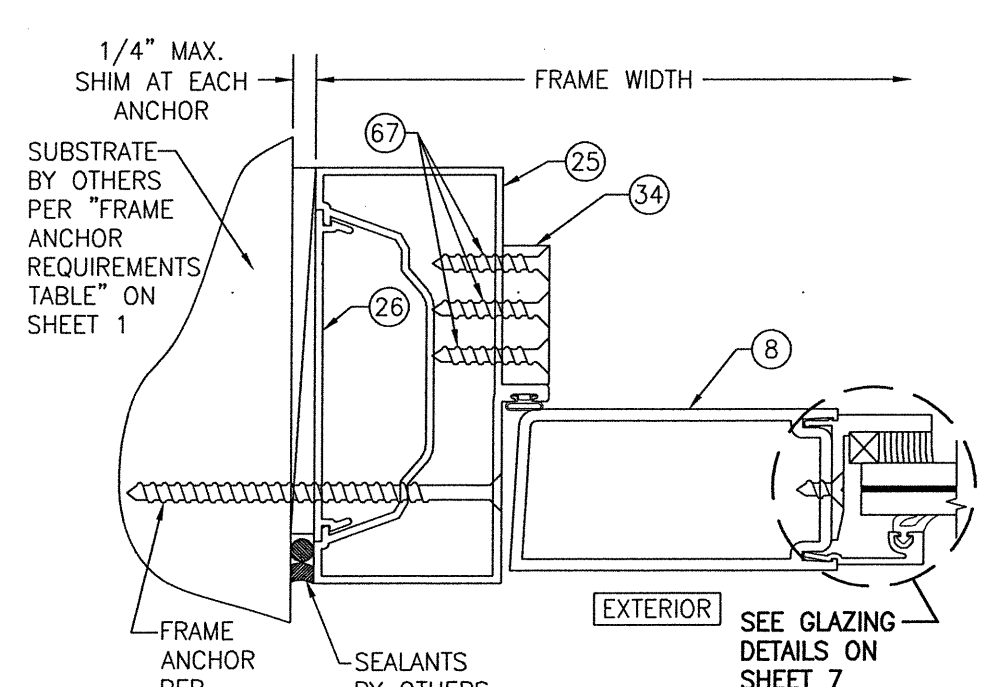
**SECTION A4**  
SCALE: 1/2 FULL  
(WITH TRIFAB 451 FRAME)



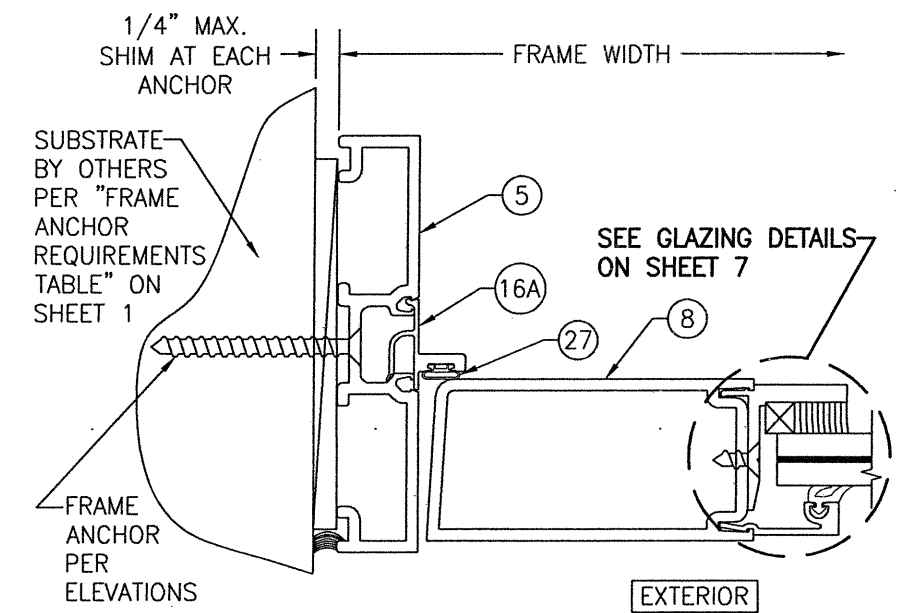
**SECTION B4**  
SCALE: 1/2 FULL  
(WITH TRIFAB 450/451 FRAMING)  
(GEAR HINGE CONDITION SHOWN. FOR OTHER HINGE CONDITIONS APPLICABLE TO THIS SECTION, SEE SECTIONS B1/8 & B3/9.)



**SECTION B5**  
SCALE: 1/2 FULL  
(DOORS WITH TRIFAB 450/451 FRAMING AND 1600 ADAPTOR JAMBS)  
(GEAR HINGE CONDITION SHOWN. FOR OTHER HINGE CONDITIONS APPLICABLE TO THIS SECTION, SEE SECTIONS B1/8 & B3/9.)

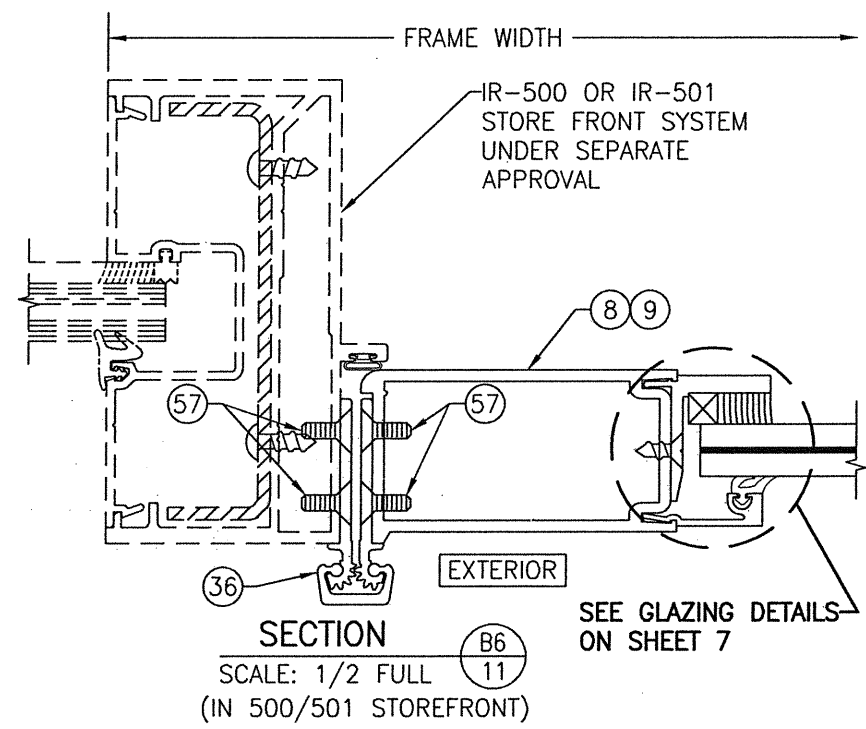
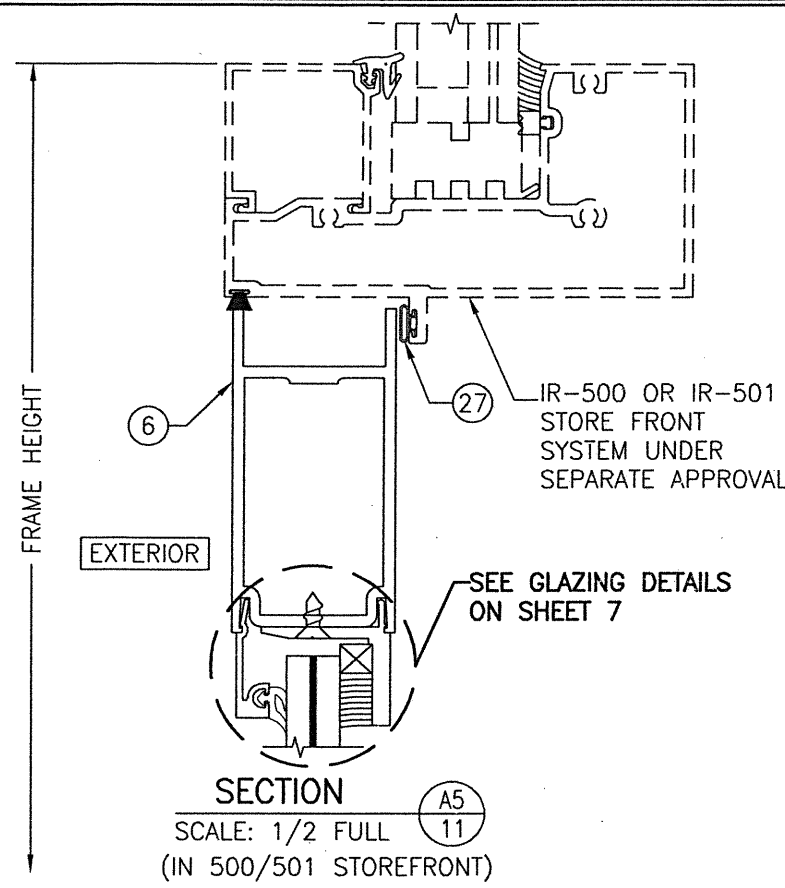


**SECTION C2**  
SCALE: 1/2 FULL  
(WITH TRIFAB 450/451 FRAMING)

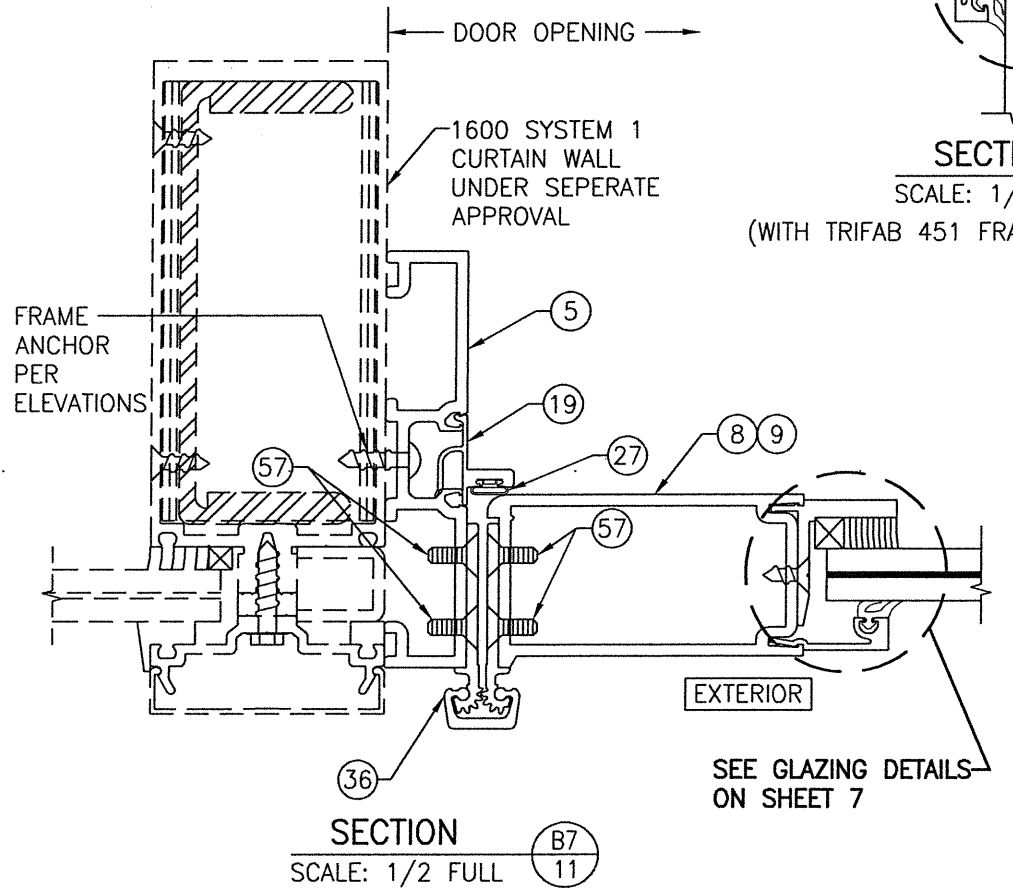
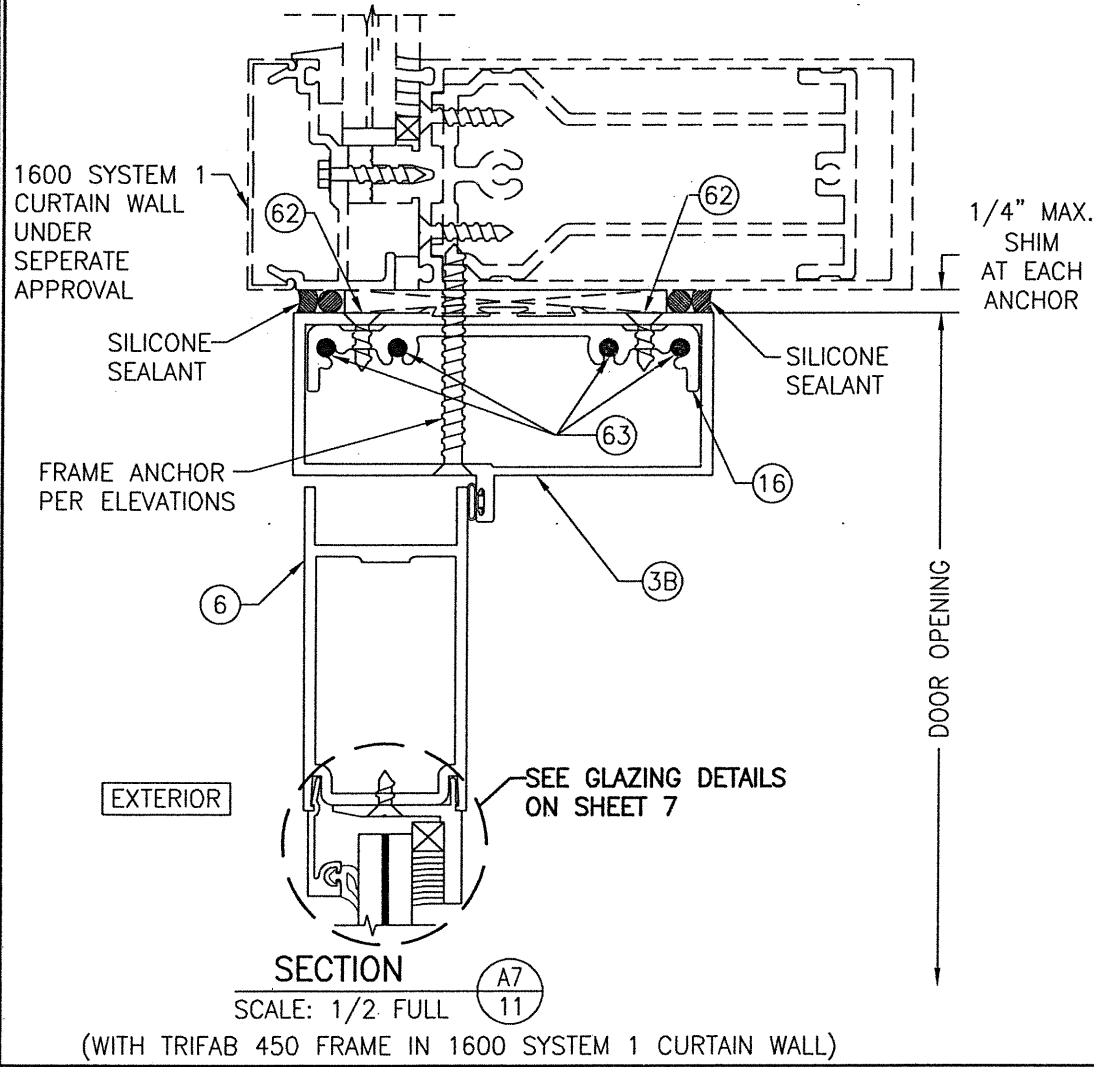
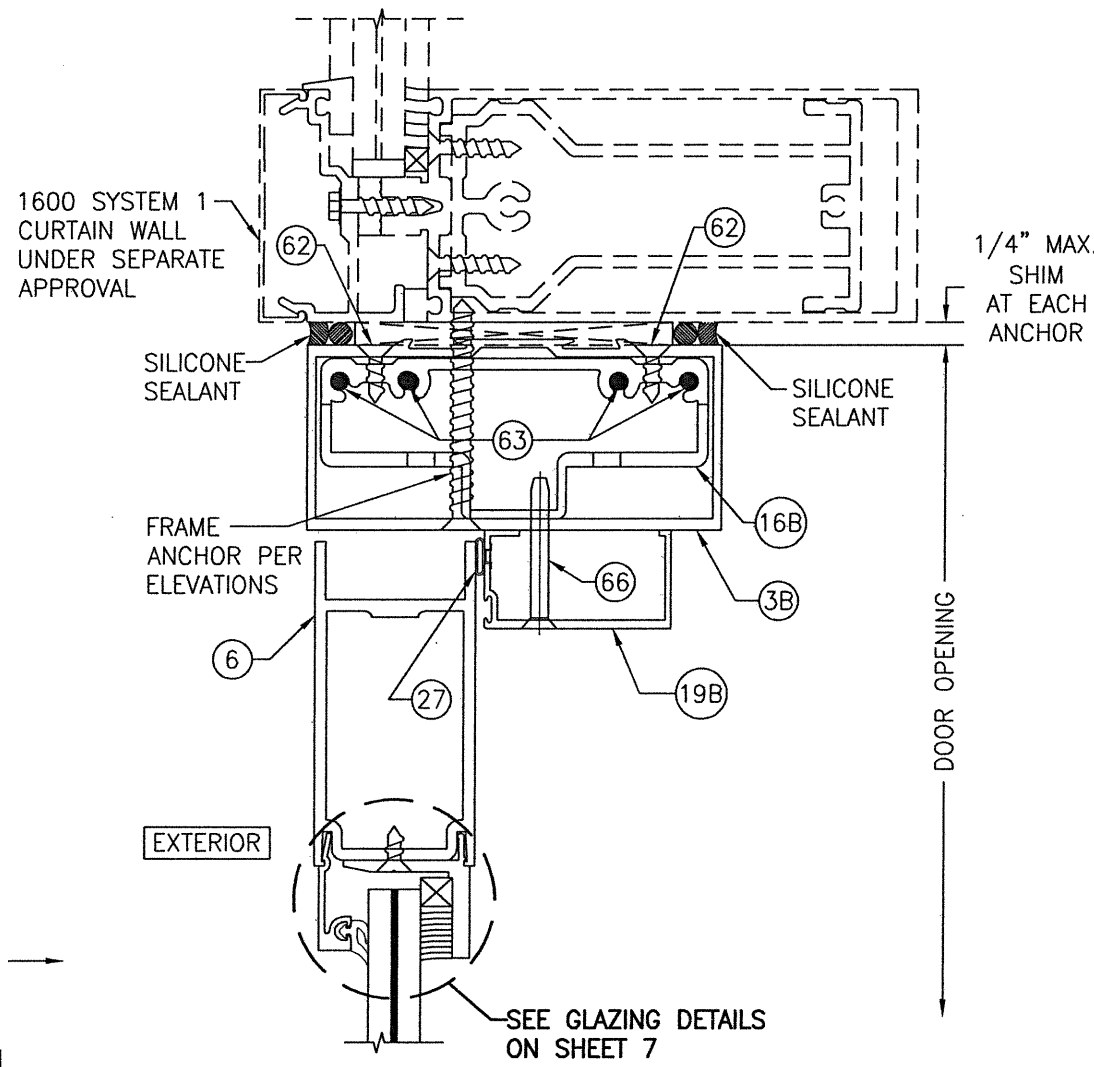


**SECTION C3**  
SCALE: 1/2 FULL  
(DOORS WITH TRIFAB 450/451 FRAMING AND 1600 ADAPTOR JAMBS)

|                                                                                                                                                       |                       |              |                   |                                            |                      |      |    |
|-------------------------------------------------------------------------------------------------------------------------------------------------------|-----------------------|--------------|-------------------|--------------------------------------------|----------------------|------|----|
| DRAWN BY:<br>W.R.M.                                                                                                                                   | CHECKED BY:<br>W.W.S. | PLOT:<br>1=2 | DATE:<br>11/10/05 | NO.                                        | REVISION DESCRIPTION | DATE | BY |
|                                                                                                                                                       |                       |              |                   |                                            |                      |      |    |
| DRAWING TITLE: 350/500R OUTSWING ALUMINUM STOREFRONT DOORS - LMI WET GLAZED                                                                           |                       |              |                   |                                            |                      |      |    |
| CONSULTANTS: W. W. SCHAEFER ENGINEERING & CONSULTING, P.A. (CA 6809)<br>7480 150TH COURT NORTH<br>PALM BEACH GARDENS, FL 33418<br>PHONE: 561-744-3424 |                       |              |                   |                                            |                      |      |    |
| MANUFACTURER: KAWNEER COMPANY, INC.<br>555 GUTHRIDGE COURT<br>NORCROSS, GA 30092<br>770-449-5555                                                      |                       |              |                   |                                            |                      |      |    |
| CERTIFICATION                                                                                                                                         | AUG 05 2021           |              |                   | WARREN W. SCHAEFER, P.E.<br>P.E. NO. 44135 |                      |      |    |
| DRAWING NO.                                                                                                                                           | 1460                  | REV.         | H                 | SHEET NO.                                  |                      |      |    |
| 10                                                                                                                                                    |                       |              |                   | OF 15                                      |                      |      |    |

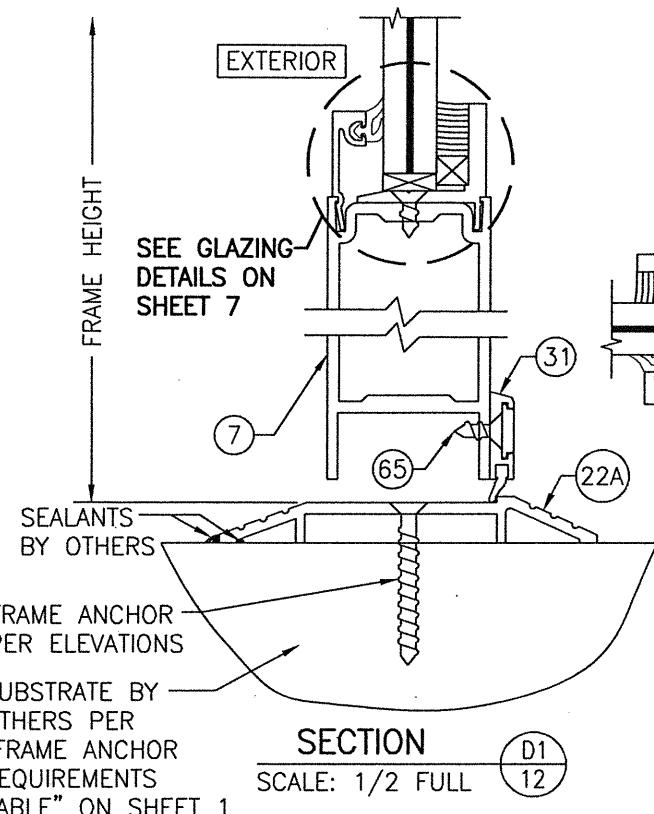


(GEAR HINGE CONDITION SHOWN. FOR OTHER HINGE CONDITIONS APPLICABLE TO THIS SECTION, SEE SECTIONS B1/8 & B3/9.)

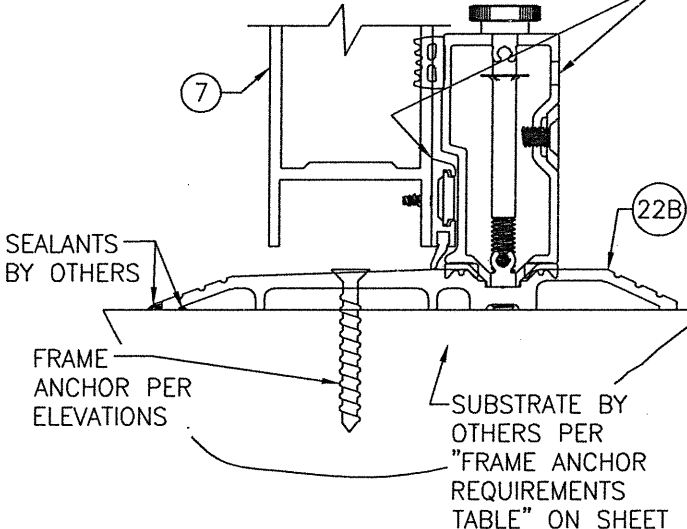


(GEAR HINGE CONDITION SHOWN. FOR OTHER HINGE CONDITIONS APPLICABLE TO THIS SECTION, SEE SECTIONS B1/8 & B3/9.)

|                                                                              |                      |                    |      |
|------------------------------------------------------------------------------|----------------------|--------------------|------|
| DRAWN BY: W.R.M.                                                             |                      | CHECKED BY: W.W.S. |      |
| PLOT: 1=2                                                                    |                      | DATE: 11/10/05     |      |
| NO.                                                                          | REVISION DESCRIPTION | BY                 | DATE |
|                                                                              |                      |                    |      |
| DRAWING TITLE: 350/500IR OUTSWING ALUMINUM STOREFRONT DOORS - LMI WET GLAZED |                      |                    |      |
| CONSULTANTS: W. W. SCHAEFER ENGINEERING & CONSULTING, P.A. (CA 6809)         |                      |                    |      |
| MANUFACTURER: KAWNEER COMPANY, INC.                                          |                      |                    |      |
| 7480 150TH COURT NORTH, PALM BEACH GARDENS, FL 33418                         |                      |                    |      |
| PHONE: 561-744-3424                                                          |                      |                    |      |
| CERTIFICATION: WARREN W. SCHAEFER, P.E. NO. 44135                            |                      |                    |      |
| DATE: AUG 05 2021                                                            |                      |                    |      |
| DRAWING NO.                                                                  | REV.                 | SHEET NO.          |      |
| 1460                                                                         | H                    | 11 OF 15           |      |

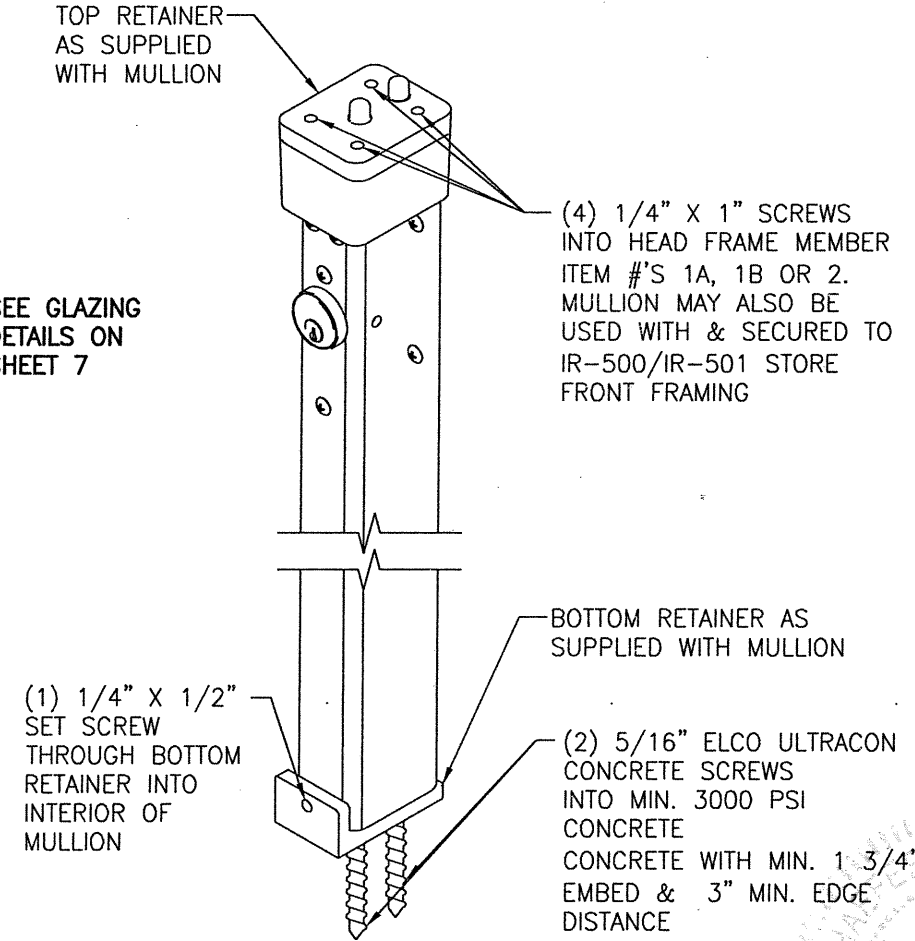
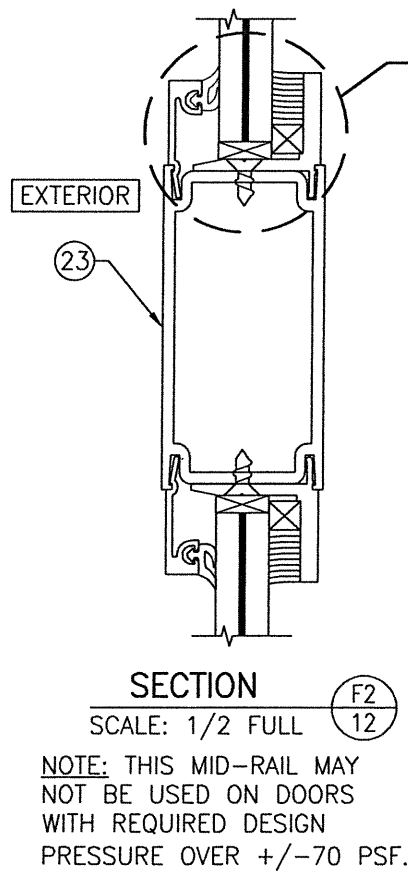
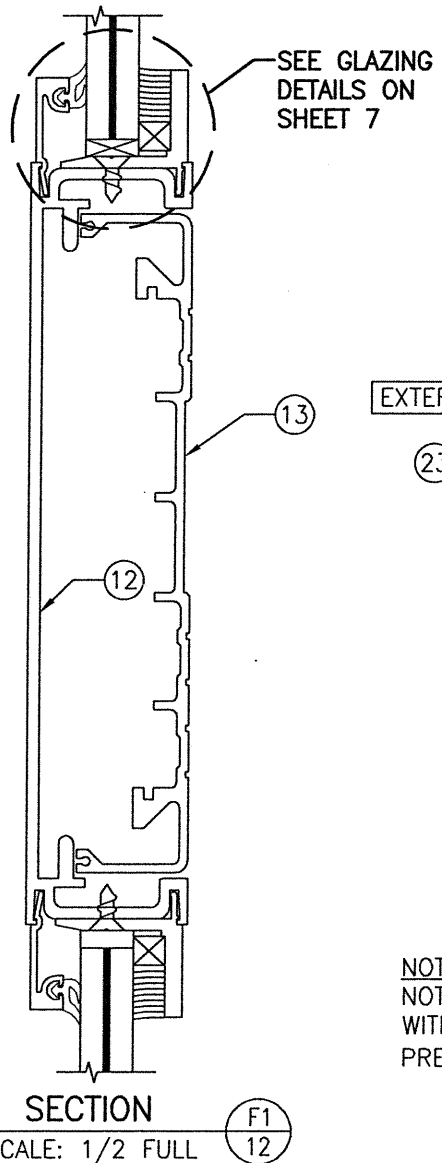
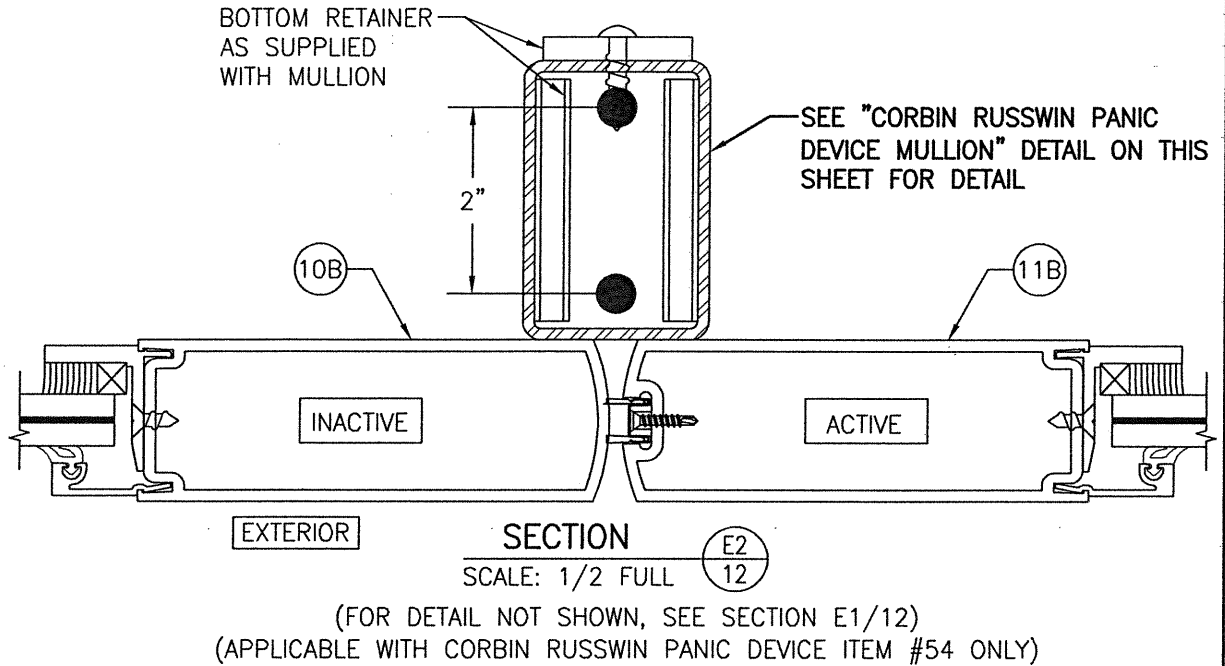
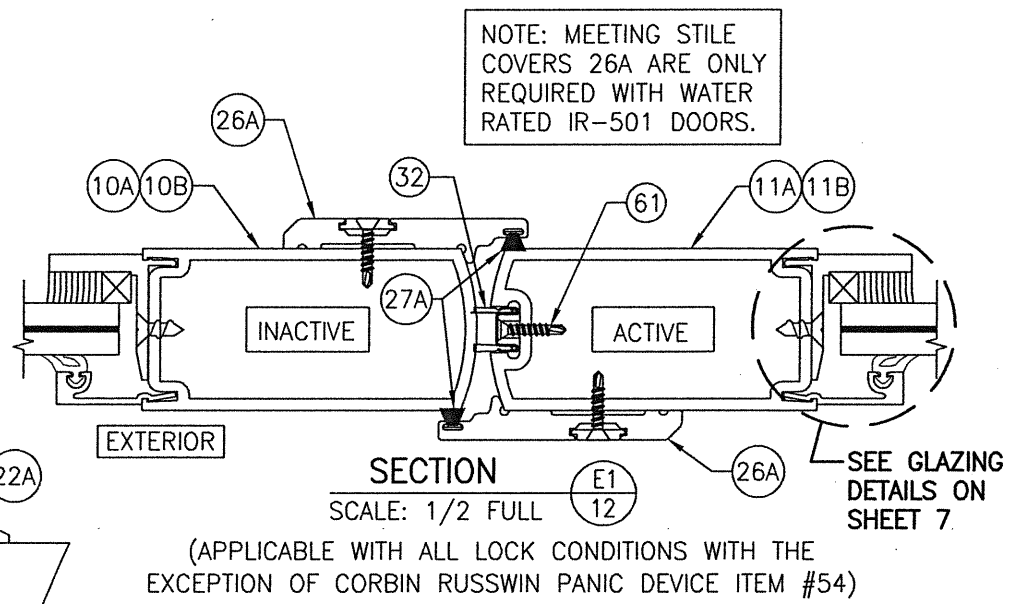


SILL DAM ASSEMBLY (KAWNEER PART NO. 050044 OR 050046) & MOUNTING STRIP (KAWNEER PART NO. 200424)



(SEE SECTION D1/12 FOR DETAIL NOT SHOWN)

- NOTES:**
- SILL 22B MAY BE USED WITH OR WITHOUT THE SILL DAM. WHEN WITHOUT THE DAM, A CAP IS PLACED OVER THE SILL RECESS. SILL IS WATER RATED ONLY WITH THE DAM ASSEMBLY & WHEN USED WITH THE IR-501 DOOR.
  - IT SHALL BE THE DOOR OWNERS RESPONSIBILITY TO INSURE THE SILL DAM IS INSTALLED IN THE EVENT OF ANY MAJOR STORM.



|                                                                              |                      |                       |    |               |
|------------------------------------------------------------------------------|----------------------|-----------------------|----|---------------|
| NO.                                                                          | REVISION DESCRIPTION | DATE                  | BY | CHECKED BY:   |
| 1-2                                                                          |                      | 11/10/05              |    | W.R.M. / W.S. |
| DRAWING TITLE: 350/500IR OUTSWING ALUMINUM STOREFRONT DOORS - LMI WET GLAZED |                      |                       |    |               |
| CONSULTANTS                                                                  |                      | MANUFACTURER          |    |               |
| W. W. SCHAEFER ENGINEERING & CONSULTING, P.A. (CA 6809)                      |                      | KAWNEER COMPANY, INC. |    |               |
| 7480 150TH COURT NORTH, PALM BEACH GARDENS, FL 33418                         |                      | 555 GUTHRIE COURT     |    |               |
| PHONE: 561-744-3424                                                          |                      | NORCROSS, GA 30092    |    |               |
|                                                                              |                      | 770-449-5555          |    |               |
| CERTIFICATION                                                                |                      |                       |    |               |
| AUG 05 2021                                                                  |                      |                       |    |               |
| WARREN W. SCHAEFER, P.E.                                                     |                      |                       |    |               |
| WARREN W. SCHAEFER, P.E. NO. 44135                                           |                      |                       |    |               |
| DRAWING NO.                                                                  |                      | REV.                  |    |               |
| 1460                                                                         |                      | H                     |    |               |
| SHEET NO.                                                                    |                      |                       |    |               |
| 12 OF 15                                                                     |                      |                       |    |               |







| ITEM #             | PART #  | ITEM DESCRIPTION                                                                                                                | MANUFACTURER/NOTES                                          |
|--------------------|---------|---------------------------------------------------------------------------------------------------------------------------------|-------------------------------------------------------------|
| PARTS              |         |                                                                                                                                 |                                                             |
| 1A                 | 575-022 | HEAD JAMB (IR-500)                                                                                                              | 6063-T6 ALUMINUM                                            |
| 1B                 | 575-162 | ALTERNATE HEAD JAMB (IR-500/501)                                                                                                | 6063-T6 ALUMINUM                                            |
| 2                  | 575-122 | HEAD JAMB (IR-501)                                                                                                              | 6063-T6 ALUMINUM                                            |
| 3A                 | 450-502 | HEAD JAMB (TRIFAB 450)                                                                                                          | 6063-T6 ALUMINUM                                            |
| 3B                 | 451-079 | HEAD JAMB (TRIFAB 451)                                                                                                          | 6063-T6 ALUMINUM                                            |
| 4                  | 575-051 | SIDE JAMB (IR 500-OR IR-501)                                                                                                    | 6063-T6 ALUMINUM                                            |
| 5                  | 163-036 | 1600 ADAPTOR SIDE JAMB                                                                                                          | 6063-T6 ALUMINUM                                            |
| 6A                 | 200-023 | DOOR; TOP RAIL                                                                                                                  | 6063-T6 ALUMINUM                                            |
| 6B                 | 200-024 | DOOR; TOP RAIL                                                                                                                  | 6063-T6 ALUMINUM                                            |
| 7                  | 200-032 | DOOR; BOTTOM RAIL                                                                                                               | 6063-T6 ALUMINUM                                            |
| 8                  | 200-005 | DOOR STILE (APPLICABLE WITH BUTT & PIVOT HINGES)                                                                                | 6063-T6 ALUMINUM                                            |
| 9                  | 200-012 | DOOR STILE (APPLICABLE WITH CONTINUOUS HINGES)                                                                                  | 6063-T6 ALUMINUM                                            |
| 10A                | 200-007 | 350IR INACTIVE DOOR MEETING STILE (APPLICABLE WITH ALL LOCK/PANIC DEVICE OPTIONS WITH THE EXCEPTION OF CORBIN RUSSWIN ITEM #54) | 6063-T6 ALUMINUM                                            |
| 10B                | 200-010 | 500IR INACTIVE DOOR MEETING STILE (APPLICABLE WITH ALL LOCK/PANIC DEVICE OPTIONS)                                               | 6063-T6 ALUMINUM                                            |
| 11A                | 200-006 | 350IR ACTIVE DOOR MEETING STILE (APPLICABLE WITH ALL LOCK/PANIC DEVICE OPTIONS WITH THE EXCEPTION OF CORBIN RUSSWIN ITEM #54)   | 6063-T6 ALUMINUM                                            |
| 11B                | 200-009 | 500IR ACTIVE DOOR MEETING STILE (APPLICABLE WITH ALL LOCK/PANIC DEVICE OPTIONS)                                                 | 6063-T6 ALUMINUM                                            |
| 12                 | 233-013 | DOOR CROSS RAIL                                                                                                                 | 6063-T6 ALUMINUM                                            |
| 13                 | 033-105 | CROSS RAIL COVER                                                                                                                | 6063-T6 ALUMINUM                                            |
| 14                 | 575-004 | GLASS STOP (IR-500)                                                                                                             | 6063-T6 ALUMINUM                                            |
| 15                 | 575-104 | GLASS STOP (IR-501)                                                                                                             | 6063-T6 ALUMINUM                                            |
| 16A                | 450-103 | SHEAR BLOCK (TRIFAB 450)                                                                                                        | 6063-T6 ALUMINUM                                            |
| 16B                | 451-141 | SHEAR BLOCK (TRIFAB 451)                                                                                                        | 6063-T6 ALUMINUM                                            |
| 16C                | 400-140 | SHEAR BLOCK (IR-500/501)                                                                                                        | 6063-T6 ALUMINUM                                            |
| 17                 | 575-035 | DEEP POCKET FILLER (IR-500)                                                                                                     | 6063-T6 ALUMINUM                                            |
| 18                 | 575-135 | DEEP POCKET FILLER (IR-501)                                                                                                     | 6063-T6 ALUMINUM                                            |
| 19A                | 450-520 | SIDE JAMB DOOR STOP                                                                                                             | 6063-T6 ALUMINUM                                            |
| 19B                | 041-045 | HEAD JAMB DOOR STOP (451 & 500/501)                                                                                             | 6063-T6 ALUMINUM                                            |
| 20A                | 575-043 | EXTERIOR DOOR MONOLITHIC GLASS STOP (APPLICABLE WITH GLAZING DETAIL 1)                                                          | 6063-T6 ALUMINUM                                            |
| 20B                | 575-041 | EXTERIOR DOOR MONOLITHIC GLASS STOP (APPLICABLE WITH GLAZING DETAIL 2)                                                          | 6063-T6 ALUMINUM                                            |
| 20C                | 575-040 | EXTERIOR DOOR I.G. GLASS STOP (APPLICABLE WITH GLAZING DETAIL 3)                                                                | 6063-T6 ALUMINUM                                            |
| 21                 | 575-045 | INTERIOR DOOR GLASS STOP                                                                                                        | 6063-T6 ALUMINUM                                            |
| 22A                | 069-139 | DOOR THRESHOLD (NON-WATER RESISTANCE RATED)                                                                                     | 6063-T6 ALUMINUM                                            |
| 22B                | 069-301 | DOOR THRESHOLD (WATER RESISTANCE RATED WITH DAM)                                                                                | 6063-T6 ALUMINUM                                            |
| 23                 | 200-058 | MID-RAIL                                                                                                                        | 6063-T6 ALUMINUM                                            |
| 24                 | 200-058 | I.G. GLASS SPACER                                                                                                               | 3005 OR 3105 ALUMINUM                                       |
| 25                 | 451-064 | SIDE JAMB (TRIFAB 450/451)                                                                                                      | 6063-T6 ALUMINUM                                            |
| 26                 | 450-126 | FLAT FILLER SHIM SUPPORT (TRIFAB 450/451)                                                                                       | 6063-T6 ALUMINUM                                            |
| 26A                | 050-044 | C09 MEETING STILE COVER FOR WATER RATED DOOR                                                                                    | MATERIAL VARIES                                             |
| SEALS AND SEALANTS |         |                                                                                                                                 |                                                             |
| 27                 | 027-078 | DOOR BULB WEATHERING                                                                                                            | ALCRYN                                                      |
| 27A                | 027-474 | .210 PILE WEATHERSTRIP                                                                                                          | PVC UNPLASTICIZED                                           |
| 28A                | 027-563 | DOOR GLAZING GASKET (APPLICABLE WITH MONOLITHIC GLASS)                                                                          | TREMCO TR-13536E EPDM<br>DUROMETER 70 +/-5                  |
| 28B                | 027-557 | DOOR GLAZING GASKET (APPLICABLE WITH I.G. GLASS)                                                                                | KRP 027-557 POLYPROPYLENE &<br>SANTOPRENE DUROMETER 65 +/-5 |
| 29                 | 127-041 | GLAZING TAPE / SILICONE SPACER                                                                                                  | SEMI-RIGID POLYURETHANE FOAM                                |
| 30A                | 027-342 | DOOR SETTING BLOCK (APPLICABLE WITH MONOLITHIC GLASS)                                                                           | NEOPRENE                                                    |
| 30B                | 027-059 | DOOR SETTING BLOCK (APPLICABLE WITH I.G. GLASS)                                                                                 | NEOPRENE                                                    |
| 31                 | 200-795 | DOOR BOTTOM RAIL WEATHER SWEEP                                                                                                  | VARIED                                                      |

| ITEM #                  | PART #  | ITEM DESCRIPTION                              | MANUFACTURER/NOTES                                                                                 |
|-------------------------|---------|-----------------------------------------------|----------------------------------------------------------------------------------------------------|
| 32                      | 200-497 | ADJUSTABLE ASTRAGAL WEATHERING                | VARIED                                                                                             |
| 33                      | -       | COMPRESSION TAPE                              | 3M                                                                                                 |
| 34                      | 966-193 | PANIC DEVICE STRIKE SPACER                    | ALUMINUM; USED W/LOCK ITEM #54                                                                     |
| HARDWARE                |         |                                               |                                                                                                    |
| 36                      | 050-821 | CONTINUOUS GEAR HINGE                         | HAGER/ROTON, STANLEY OR ABH                                                                        |
| 37                      | 037-264 | BUTT HINGE                                    | HAGER, STANLY OR MCKINNEY                                                                          |
| 38                      | 050-322 | TOP OFFSET PIVOT HINGE                        | KAWNEER                                                                                            |
|                         | 050-331 | INTERMEDIATE OFFSET PIVOT HINGE               |                                                                                                    |
|                         | 050-326 | RH BOTTOM OFFSET PIVOT HINGE                  |                                                                                                    |
|                         | 050-327 | LH BOTTOM OFFSET PIVOT HINGE                  |                                                                                                    |
| 39                      | -       | ACTIVE DOOR LOCK ASSEMBLY                     | ADAMS-RITE 1850 3-POINT LOCK SYSTEM WITH KAWNEER'S CYLINDER,                                       |
| 40                      | 50-079  | INACTIVE DOOR TOP FLUSH BOLT                  | ADAMS-RITE 1850 FLUSH BOLT SYSTEM WITH KAWNEER'S PUSH PACKAGE                                      |
|                         | 50-075  | INACTIVE DOOR BOTTOM FLUSH BOLT               |                                                                                                    |
| 41                      | -       | ACTIVE DOOR LOCK ASSEMBLY                     | ADAMS-RITE MS 1850 3-POINT LOCK SYSTEM WITH KAWNEER'S CYLINDER, THUMBTURN & PUSH PACKAGE           |
| 42                      | -       | INACTIVE DOOR LOCK ASSEMBLY                   | ADAMS-RITE 2180 2-POINT LOCK SYSTEM WITH KAWNEER'S PUSH PACKAGE                                    |
| 45                      | -       | CONCEALED ROD EXIT/PANIC DEVICE               | JACKSON 2086                                                                                       |
| 46                      | -       | CONCEALED ROD EXIT/PANIC DEVICE               | KAWNEER 1686                                                                                       |
| 47                      | -       | CONCEALED ROD EXIT/PANIC DEVICE               | SARGENT 8400                                                                                       |
| 48                      | -       | CONCEALED ROD EXIT/PANIC DEVICE               | PANELINE CR-90                                                                                     |
| 49                      | -       | CONCEALED ROD EXIT/PANIC DEVICE               | SARGENT AD8400                                                                                     |
| 50                      | -       | CONCEALED ROD EXIT/PANIC DEVICE               | VON DUPRIN HH9947                                                                                  |
| 51                      | -       | CONCEALED ROD EXIT/PANIC DEVICE               | CALIBRE 9100                                                                                       |
| 52                      | -       | CONCEALED ROD EXIT/PANIC DEVICE               | ADAMS RITE G86                                                                                     |
| 53                      | -       | CONCEALED ROD EXIT/PANIC DEVICE               | FALCON HH1690                                                                                      |
| 54                      | -       | RIM PANIC DEVICE WITH KEYED REMOVABLE MULLION | CORBIN RUSSWIN ED5200S(A)                                                                          |
| MISCELLANEOUS FASTENERS |         |                                               |                                                                                                    |
| 55                      | -       | NO. 12 X 2" SCREW                             | 3" FROM ENDS & MAX. 11" O.C.                                                                       |
| 56                      | -       | NO. 12-24 X 9/16" S.S. SCREW                  | 8 PER HINGE                                                                                        |
| 57                      | -       | NO. 12-24 X 13/32" SCREW                      | 2 9/16" FROM ENDS & MAX. 5 1/8" O.C. (52 MAX. PER HINGE)                                           |
| 58                      | -       | 5/16"-18 X 5/8" SCREW                         | 2 PER TOP PIVOT HINGE                                                                              |
| 59                      | -       | NO. 12-24 X 9/16" S.S. SCREW                  | 2 PER INTERMEDIATE PIVOT HINGE                                                                     |
| 60                      | -       | 1/4-20 X 3/8" SCREW                           | 3 PER BOTTOM PIVOT HINGE                                                                           |
| 61                      | -       | NO. 6 X 11/16" SCREW                          | 10 PER LEAF                                                                                        |
| 62                      | -       | NO. 10 X 9/16" S.S. SCREW                     | 2 PER CLIP                                                                                         |
| 63                      | -       | NO. 10 X 1 19/32" S.S. SCREW                  | 4 PER CLIP                                                                                         |
| 64                      | -       | NO. 10 X 1/2" S.S. SCREW                      | 3" FROM ENDS & MAX. 7 1/2" O.C. AT TOP & BOTTOM RAILS - 3" FROM ENDS & MAX. 11 1/8" O.C. AT STILES |
| 65                      | -       | NO. 6 X 3/4" S.S. SCREW                       | 1/4" FROM ENDS & MAX. 9 17/32" O.C.                                                                |
| 66                      | -       | NO. 10 X 1 5/8" FHTF "B" SCREW                | 1" FROM ENDS & MAX. 16" O.C.                                                                       |

|                                                                                                                                                                     |                       |
|---------------------------------------------------------------------------------------------------------------------------------------------------------------------|-----------------------|
| DRAWN BY:<br>W.R.M.                                                                                                                                                 | CHECKED BY:<br>W.W.S. |
| PLOT:<br>1-2                                                                                                                                                        | DATE:<br>11/10/05     |
| DATE                                                                                                                                                                |                       |
| BY                                                                                                                                                                  |                       |
| REVISION DESCRIPTION                                                                                                                                                |                       |
| NO.                                                                                                                                                                 |                       |
| DRAWING TITLE: 350/500IR OUTSWING ALUMINUM STOREFRONT DOORS - LMI WET GLAZED                                                                                        |                       |
| MANUFACTURER:<br><b>KAWNEER COMPANY, INC.</b><br>555 GUTHRIDGE COURT<br>NORCROSS, GA 30092<br>770-449-5555                                                          |                       |
| CONSULTANTS<br><b>W. W. SCHAEFER ENGINEERING &amp; CONSULTING, P.A. (CA 6809)</b><br>7480 150TH COURT NORTH, 33418<br>PALM BEACH GARDENS, FL<br>PHONE: 561-744-3424 |                       |
| CERTIFICATION<br>AUG 05 2021<br>WARREN W. SCHAEFER, P.E.<br>P.E. NO. 44135                                                                                          |                       |
| DRAWING NO.<br><b>1460</b>                                                                                                                                          | REV.<br><b>H</b>      |
| SHEET NO.<br><b>15 OF 15</b>                                                                                                                                        |                       |